



Masters of Knowledge

Year 7

Summer Term

Masters of Knowledge homework is designed to strengthen recall of core knowledge.

This booklet has a series of weekly questions relating to the core knowledge students need to know for each of their subjects.

Students are encouraged to use both their Knowledge Organisers and the Masters of Knowledge questions to further strengthen their recall of this core knowledge.


Recall of core knowledge will be checked through a Masters of Knowledge quiz.

Contents

English Term 3a	Page 3
English Term 3b	Page 4
Maths Term 3a	Page 5
Maths Term 3b	Page 6
Science Term 3a	Page 7
Science Term 3b	Page 8
Design Technology Term 3a	Page 9
Design Technology Term 3b	Page 10
IT Term 3a	Page 11
IT Term 3b	Page 12
Music Term 3a	Page 13
Music Term 3b	Page 14

Year 7 English - Summer Term 3a




Week 1	Week 2		Week 3		Week 4	
Common Homework	Questions	Answers	Questions	Answers	Questions	Answers
<p>Opportunity to discuss your child's current reading book.</p> <p>Scan the QR for top tips to support reading at home</p> 	What are the two uses for a comma?	To separate clauses in a sentence and to separate items in a list.	What two address' do you need on a formal letter?	Writer's address and recipient's address.	What is an omissive apostrophe?	Shows a contraction of two words/ a letter is missing.
	What word starting with 'd' needs to be included in a formal letter layout?	Date	What is a possessive apostrophe?	A pronoun that indicates ownership	What word starting with 'G' is needed in a formal letter?	Greeting
	Name the three elements of rhetoric.	Ethos, Logos, Pathos	What should be at the end of an article?	A short concluding paragraph.	Which two rhetorical devices begin with 'S'?	Statistics and second person
	What word starting with 'h' needs to be included in an article?	Headline	Which discourse marker starts with 'E'?	Essentially	How many words are in a minor sentence?	One
	What are the two uses of a semi colon?	To separate two statements that are connected in meaning. To connect the second part of a sentence to the first.	Which rhetorical device starts with 'E' and appeals to how readers feel?	Emotive Language	What two things do you need to include when thinking about sentences?	Variety in lengths, variety in openings.

Week 5	
Questions	Answers
What is the purpose of a question mark?	Indicates that a question is being asked.
What should be at the end of a formal letter?	Closing signature
Which three types of sentences should be included in your writing?	Simple, compound and complex sentences.
Which two discourse markers start with 'F'?	Firstly, Furthermore
Which skill beginning with 'D' will you need in this topic?	Debating



Year 7 English - Summer Term 3b

Week 1 Common Homework		Week 2		Week 3		Week 4	
<p>Opportunity to discuss your child's current reading book.</p> <p>Scan the QR for top tips to support reading at home</p> 		Questions	Answers	Questions	Answers	Questions	Answers
		What are the 2 uses of apostrophes?	Possession and Omission (also known as contraction)	What does the R stand for in AFOREST?	Repetition and rhetorical questions	Why are statistics useful?	They can help prove your points; they can make you sound more knowledgeable about your topic.
		What is a rhetorical question?	A question that doesn't expect an answer, designed to prove a point.	Give 3 crises facing our environment	Global warming, fast fashion, plastic pollution, deforestation, fossil fuels, extinction, climate change.	Who is Greta Thunberg and why did she become famous?	A Swedish environmental activist who went on a 'school strike' to make the government take action to protect the environment.
		What does the A stand for in AFOREST?	Alliteration	How much of the global CO ₂ does America produce?	25%	What is ethos?	Coming across as trustworthy and likeable
		What 2 things should be at the start of every article?	Headline, sub-headline (also known as strapline)	What is pathos?	Appealing to emotions	What is a triple?	3 words used to add detail and emphasis
		Firstly, secondly, thirdly, are all examples of what?	Discourse markers	What is meant by 'fast fashion'?	Cheap, low-quality clothing produced quickly.	What makes good teamwork?	Listening, communication, patience, sharing ideas, everyone doing their part, kindness, shared focus.

Week 5		Week 6	
Questions	Answers	Questions	Answers
What is a pronoun?	A way of referring to someone without using their name.	What is the F in AFOREST?	Facts (could also be first person)
What do we mean by 'direct address'?	Using 'you' and talking directly to your audience.	What is emotive language?	Powerful language designed to get a strong emotional response from the reader/audience.
What is the difference between a fact and an opinion?	A fact can be proven, whilst an opinion can't - it's just what you think.	What is the correct term for going over the top?	Exaggeration
What is logos?	Using logic and facts to support your argument.	What has caused 40% of deforestation?	Space for cattle (meat and dairy industry)



Year 7 Maths - Summer Term 3a

Week 1	Week 2		Week 3		Week 4	
Common Homework	Questions	Answers	Questions	Answers	Questions	Answers
<p>Please complete the Common Homework 20 Questions Worksheet based on last half term's work. Sheet handed out in class and will also be posted on Satchel</p>	What is a polygon?	A two dimensional shape with closed straight sides.	How many degrees are in a full turn?	360 degrees	What is a quadrilateral?	A four-sided shape
	Can you give an example of a polygon?	Hexagon, pentagon, square etc.	How many degrees are in a half turn?	180 degrees	What is a rhombus?	A quadrilateral. A special parallelogram with four equal length sides
	What instrument would you use to measure a line in your maths lessons?	A ruler	How do we define an acute angle?	An angle $0 < x < 90$	What do adjacent angles on a straight line sum to?	180 degrees
	What instrument would you use to measure an angle in your maths lessons?	A protractor	How do we define an obtuse angle?	An angle $90 < x < 180$	What is true about vertically opposite angles?	They are equal in size
	What metric units are on a ruler?	cm and mm	How do we define a reflex angle?	An angle $180 < x < 360$	What are parallel lines?	Lines that run alongside each other and never meet

Week 5	
Questions	Answers
What is the sum of angles around a point?	360 degrees
What is the name of a polygon with 10 sides?	Decagon
What is the name of a polygon with all sides and angles the same size?	A regular polygon
What shape is a pie chart?	Circle
What do the angles in a pie chart sum to?	360



Year 7 Maths - Summer Term 3b



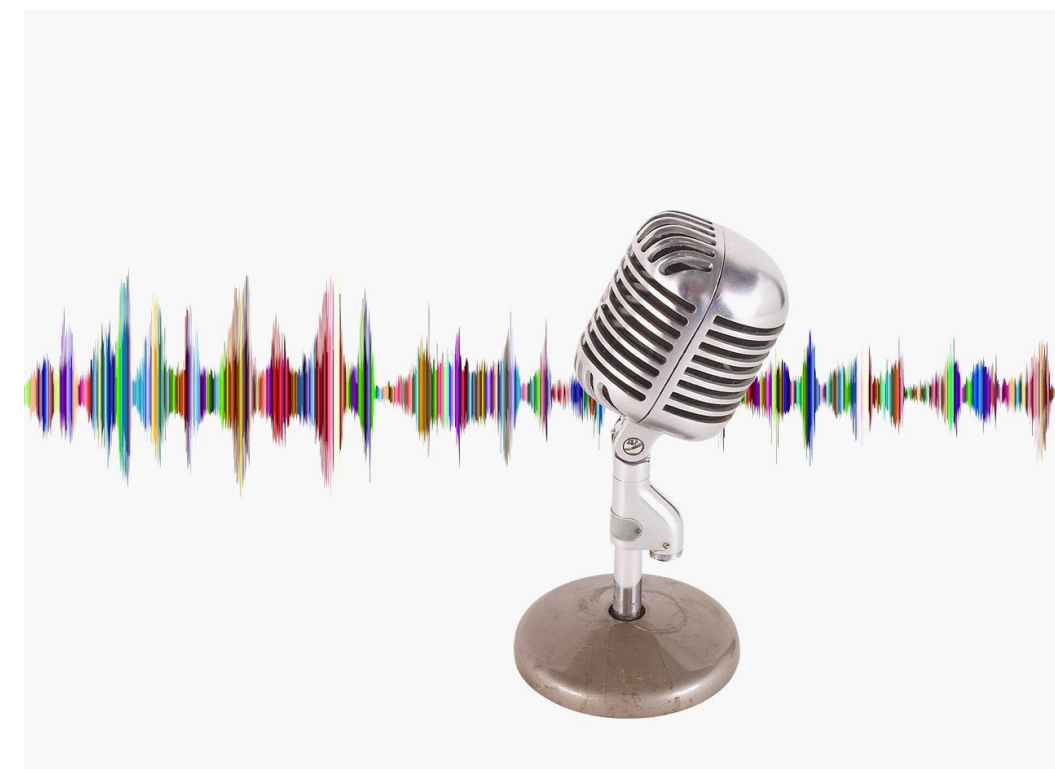
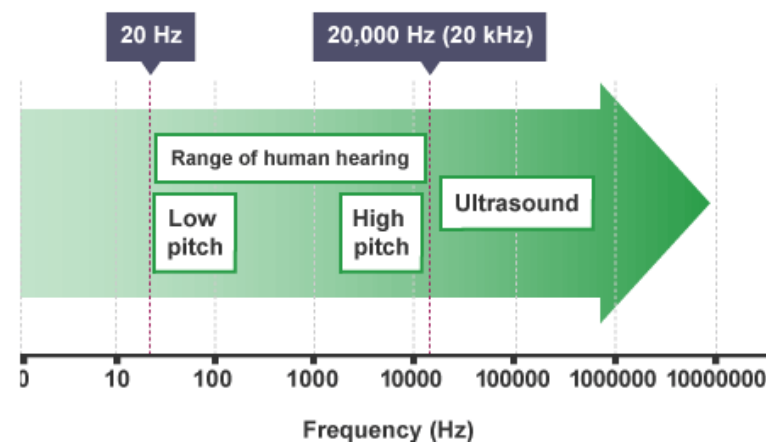
Week 1		Week 2		Week 3		Week 4																										
Common Homework		Questions	Answers	Questions	Answers	Questions	Answers																									
Please complete the Common Homework 20 Questions Worksheet based on last half term's work. Sheet handed out in class and will also be posted on Satchel		Where is the intersection on a venn diagram?	The overlapping part	How can probability be written?	As a fraction, decimal or percentage	List the first 5 multiples of 3x	3x, 6x, 9x, 12x, 15x																									
		Where is the union on a venn diagram?	The two ellipses that join (including the intersection)	Probability is always a value between which two numbers?	0 and 1	List all of the factors of 10	1, 2, 5, 10																									
		What is the sample space for rolling a 6-sided die?	S={1,2,3,4,5,6}	If an event is impossible, what is the probability of it occurring?	0	What is the definition of a prime number?	A number with exactly two factors																									
		What is the sample space for throwing an unbiased coin?	S={heads,tails}	What is the formula for probability?	P=number of times an event happens/total number of outcomes	List the first 5 triangular numbers	1, 3, 6, 10, 15																									
		What is a subset?	A subset is where all elements in one set are also in a different set.	There are only red and blue balls in a bag. If the probability of picking a blue ball is 0.1, what is the probability of picking a red ball?	0.9	List the first 5 square numbers	1, 4, 9, 16, 25																									
Week 5		Week 6		Week 7		<div style="background-color: #2e7d32; color: white; padding: 10px; text-align: center;"> <h3>Prime Numbers</h3> <table style="margin: auto; border-collapse: separate; border-spacing: 5px;"> <tr><td>2</td><td>3</td><td>5</td><td>7</td><td>11</td></tr> <tr><td>13</td><td>17</td><td>19</td><td>23</td><td>29</td></tr> <tr><td>31</td><td>37</td><td>41</td><td>43</td><td>47</td></tr> <tr><td>53</td><td>59</td><td>61</td><td>67</td><td>71</td></tr> <tr><td>73</td><td>79</td><td>83</td><td>89</td><td>97</td></tr> </table> </div>		2	3	5	7	11	13	17	19	23	29	31	37	41	43	47	53	59	61	67	71	73	79	83	89	97
2	3	5	7	11																												
13	17	19	23	29																												
31	37	41	43	47																												
53	59	61	67	71																												
73	79	83	89	97																												
Questions	Answers	Questions	Answers	Questions	Answers																											
Find the LCM of 9 and 12	36	Give an example of an operator that is commutative	Addition or multiplication	How do we round numbers when estimating?	To one significant figure																											
Find the HCF of 18 and 30	6	What is a dividend?	The number being divided	Work out using a mental method: 53+12	50+10+3+2=60+5=65																											
Express 30 as a product of prime factors	2 x 3 x 5	What is a divisor?	The number we divide by	If x+y=10, find 3x+3y	30																											
Express 60 as a product of prime factors	2 x 2 x 3 x 5	What is a quotient?	The result of a division	If x+y=10, find 2x+2y-11	9																											
Why would you need to find the HCF when adding or subtracting fractions?	It helps you find the lowest common denominator	What is an equation?	A mathematical statement that two things are equal	If n-m=7, find m-n	-7																											

Year 7 Science - Summer Term 3a

Week 1		Week 2		Week 3		Week 4	
Questions	Answers	Questions	Answers	Questions	Answers	Questions	Answers
What type of wave are sound waves?	Sound waves are longitudinal.	Which of the following is measured in Decibels (Db)?	Amplitude	What is the speed of sound in water?	1500 m/s	Which property best describes most metals compared to non-metals?	High melting points and shiny surfaces
In a sound wave, the direction of the wave is _____ to the movement of the source.	Parallel	Which of the following is measured in Hertz (Hz)?	Frequency	What is the range of frequencies that humans can typically hear?	20 Hz to 20,000 Hz	Which term describes a metal that can be hammered into thin sheets without breaking?	Malleable
What is the maximum displacement that any particle has, measured in Decibels (Db)?	Amplitude	True or false? Sound travels fastest in solids because the particles are closer together?	True	Which part of the ear collects sound waves?	The ear lobe or pinna	Why can metals conduct electricity well?	They have free electrons that can move
What is the number of waves passing per second, measured in Hertz (Hz)?	Frequency	True or false? Sound travels slowest in gases because the particles are spread far apart.	True	Which part of the ear amplifies the vibrations?	The small bones (ossicles)	In metals, atoms arranged in rows and layers make them easier to shape because layers can...	Slide across one another
What is the distance from one point on a wave to the equivalent point on the next wave (m)?	Wavelength	What is the speed of sound in air?	330 m/s	Echoes are _____ of sound waves.	Reflections	What is formed when a metal reacts with oxygen?	Metal oxide

Week 5

Questions	Answers
Which word equation correctly shows an oxidation reaction of copper?	Copper + oxygen → copper oxide
Sulfur reacts with oxygen to make sulfur dioxide. What does the prefix di- mean here?	Two oxygen atoms
Which acid forms salts ending in chloride when reacting with metals?	Hydrochloric acid (HCl)
During a metal plus acid reaction, which gas is produced?	Hydrogen
Describe a displacement reaction between metals.	When a more reactive metal displaces a less reactive metal from its compound



Year 7 Science - Summer Term 3b

Week 1		Week 2		Week 3		Week 4	
Questions	Answers	Questions	Answers	Questions	Answers	Questions	Answers
Which hazard symbol warns that a chemical can corrode skin or metals?	 Test tube on hand	What colour does red litmus paper go in acid?	Stays red	Which method measures how much acid is needed to neutralise a set amount of alkali using universal indicator?	Add acid until solution turns green	How do transparent materials interact with light?	Transmit
Which pair correctly matches a common laboratory acid with its chemical formula?	Hydrochloric acid – HCl	On the pH scale, which range represents acidic solutions?	pH 1–6	Which statement about acid rain's impact on the environment is supported?	It can acidify soil and harm crops	What condition creates a shadow behind an object?	Light is absorbed by opaque materials
Which substance is a laboratory alkali?	Sodium hydroxide	Which everyday substance is a strong alkali according to the pH scale?	Drain cleaner	Which statement best describes how light travels and is detected by humans?	Light travels as a wave and we see its visible part	How fast does light travel in a vacuum?	300 000 000 m/s
What color does blue litmus paper turn in an acidic solution?	Turns red	Which equation shows a neutralisation reaction?	Acid + Alkali → Salt + water	How do opaque materials interact with light?	Absorb	Which statement best describes light in relation to the electromagnetic spectrum?	Light is the visible part of the electromagnetic spectrum
Which indicator is colourless in acid and pink in alkali?	Phenolphthalein	A wasp sting is alkaline. What can help neutralise it?	Vinegar or weak acid	How do translucent materials interact with light?	Scatter and partially transmit	How does a solar eclipse happen?	The Moon blocks sunlight and casts a shadow
Week 5		Week 6		Week 7			
Questions	Answers	Questions	Answers	Questions	Answers		
What is specular reflection?	Reflection from a smooth, flat surface producing clear rays	When drawing a ray diagram for reflection or refraction, what is the purpose of the normal line?	It provides a reference to measure angles	Splitting white light into its colours using a prism is called what?	Dispersion process		
For a ray striking a plane mirror, what relationship holds between two angles?	Incidence equals reflection	Which part of the eye first lets incoming light enter?	Pupil allows light in	Corrective lenses help vision by doing what to light rays?	Change travel direction		
Where does diffuse reflection occur?	On rough surfaces	What is the main job of the cornea and lens working together?	Focus light on retina	Which colour of visible light has the shortest wavelength?	Violet is shortest		
What causes refraction when light crosses from air into glass?	Light changes speed at the boundary	Where is the image formed inside the eye?	On the retina layer	Which structure sends signals from the eye to the brain?	Optic nerve carries signals		
A ray enters glass from air at an angle to the normal. What happens to its direction and why?	Direction changes because speed changes	What causes myopia (nearsightedness)?	Eye too long, lens too strong	Which colour of visible light has the longest wavelength?	Red light longest		

Year 7 Design and Technology -Summer Term 3a



Week 1		Week 2		Week 3		Week 4	
Questions	Answers	Questions	Answers	Questions	Answers	Questions	Answers
What does the term rendering mean in design?	Rendering is the process of adding shade, colour and texture to a 2D or 3D drawing to make it look realistic.	What material is used for the body of the mini figure?	Pine (a softwood).	What tool is used to cut out the body?	A tenon saw.	Why is accuracy important when drilling holes?	Accurate drilling ensures the arms and legs fit properly.
What is annotation?	Annotation is extra information added to a design to explain ideas and decisions.	What material is used for the head and arms?	PLA (a thermoplastic made from renewable sources).	What size holes are drilled for the arms and legs?	5mm holes.	Why are the legs laminated before drilling?	To increase thickness and strength before shaping and drilling.
Why should you draw lightly in pencil first when designing?	Drawing lightly allows you to rub out mistakes and improve your ideas easily.	Why is laser ply used for the legs?	Laser ply is strong and stable because the layers run at 90 degrees to each other.	Why is sanding important?	Sanding smooths edges and improves the final finish.	What does CAD/CAM stand for?	Computer Aided Design and Computer Aided Manufacture.
What does ACCESS FM help you do?	ACCESS FM helps you evaluate and explain your design using key design factors such as Aesthetics, Customer and Materials.	What is 3D printing?	3D printing is making a physical object from a digital 3D model by building it up in thin layers.	Why must you wear goggles in the workshop?	Goggles protect your eyes from dust and flying debris.	What should you do if you make a mistake while cutting?	Stop, assess the mistake and adjust carefully rather than continuing incorrectly.
Give one way your mini figure design could appeal to the customer	It could use bright colours, a popular theme or details suited to the target age group.	What is lamination?	Lamination is joining layers of material together to increase strength and stability.	What could happen if you rush the marking out stage?	The product may be inaccurate, uneven or poorly fitted.	Give one way to improve the overall finish of your mini figure.	Final sanding, careful glueing or applying an even finish.

Week 5

Questions	Answers
What does evaluation mean in design?	Evaluation is reviewing and improving a product to make it more useful, appealing and successful.
What does WWW stand for?	What Went Well.
What does EBI stand for?	Even Better If.
Name one skill you developed during this project.	Examples include accurate cutting, drilling, 3D modelling, rendering or annotation.
If you made the project again, what would you improve?	Improve accuracy, improve the finish or develop the design further.



Year 7 Design and Technology - Summer Term 3b

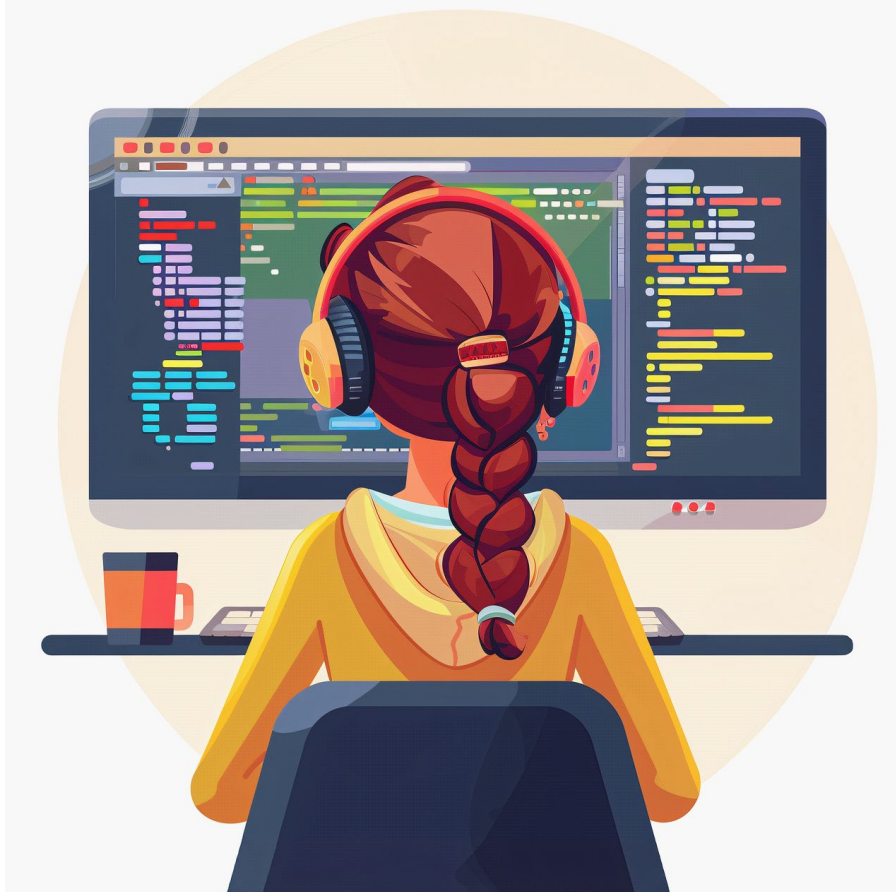
Week 1		Week 2		Week 3		Week 4	
Questions	Answers	Questions	Answers	Questions	Answers	Questions	Answers
What is the purpose of a design brief?	To explain the problem that needs to be solved.	What does branding help a product do?	It helps customers recognise the product.	Why should a logo be simple?	Simple logos are easier to recognise.	Why must food packaging include ingredients?	To inform customers what is inside the product.
What are the 3W's and 1H used for in D&T?	To help understand What, Where, Why and How.	Why is investigating existing products useful?	It shows what works well and what could be improved.	What makes a logo memorable?	It is easy to remember.	What is the purpose of nutritional information?	To show energy and nutrient values.
Why must smoothie packaging protect the drink?	To keep the drink safe and fresh.	What does aesthetics mean?	How the product looks.	What does timeless mean in logo design?	It will still look good in many years.	Why is a barcode included on packaging?	So shops can scan and price the product.
What does target audience mean?	The group of people the product is designed for	Why must packaging consider cost?	So it is affordable to make and sell.	Why must a logo be versatile?	So it works in different sizes and places.	What is a development net?	A flat shape that folds into 3D packaging.
Why is colour important in packaging	It makes the product eye-catching and appealing.	Why is function important in packaging?	Because it must protect and hold the product properly.	Why do we annotate design ideas?	To explain design decisions clearly.	What is a score line used for?	To help the material fold accurately.
Week 5		Week 6		Week 7			
Questions	Answers	Questions	Answers	Questions	Answers		
What is a laser cutter used for?	To cut and engrave materials precisely.	Why should you test a net before final cutting?	To check it folds together correctly.	What does evaluation mean in D&T?	Reviewing strengths and weaknesses of a product.		
Why are laser cutters accurate?	They are controlled by a computer.	Why is accurate measuring important?	To ensure parts fit together properly.	What does WWW stand for?	What Went Well.		
What does changing speed affect when laser cutting?	How deeply or cleanly the material is cut.	How does neat glueing improve packaging?	It improves strength and appearance.	What does EBI stand for?	Even Better If.		
Why is safety important in the workshop?	To prevent accidents and injuries.	Why should colour be applied carefully?	To make the packaging look professional.	Why is peer feedback useful?	Others may notice improvements you missed.		
What type of drawing is sent to a laser cutter?	A vector drawing file.	Why is development important in design?	It allows ideas to be improved before the final version.	Name one improvement you could make to your packaging.	For example: improve accuracy, improve finish or improve branding.		

Year 7 IT - Summer Term 3a



Week 1		Week 2		Week 3		Week 4	
Questions	Answers	Questions	Answers	Questions	Answers	Questions	Answers
If we want to get the Turtle to draw, what command do we need to use?	Pendown, or turtle.pendown	Give one reason we would use a loop in our code?	To make the code neater, to save repeating typing lines of code over and over again	What do we call the movement between two slides in PowerPoint?	Slide transition	What shape do we use in a flowchart to show a process? (e.g. a calculation happening in the program)	Rectangle
What will the code Turtle.forward(100) do?	Make the turtle move forward 100 steps	What word do we use to start a loop	For	What is the name given to the diamond shape in a flowchart?	Decision	Give one example of how you can tell if an email is a phishing email	Strange link, sense of urgency in the message, incorrect email address, not personalised, bad quality images, old brand logo
What do we call the area we write code	Code Editor	for i in range (5) will repeat the code how many times?	5	Is a printer an input or output device?	Output	What part of a computer is called the brains of the computer?	CPU
Define the term Algorithm	Series of step by step instructions to perform a certain task	If I wanted to draw a square, how many times could I loop the instructions t.forward(100), t.left(90)?	4	Give two features of a strong password	At least 8 characters, capital letters, lowercase letters, numbers, symbols, no names	What would the command look like to loop code 3 times?	for i in range (3)
True or False? Python is a type of programming language	True	What command do we use to change the thickness of the pen?	pensize()	What command would I enter first if I want to move the turtle without drawing a line?	penup()	I have the same background on all my slides. All of my slides have the same font and font colour. What is the term to describe this?	Consistent design

Week 5	
Questions	Answers
A keyboard is what type of device?	Input Device
Which key term: A sequence of instructions given to perform a task	Algorithm
What is the name given to the parrallelogram shape used in a flowchart?	Input/Output shape
An email from a strange account trying to persuade you to give over persoal information such as credit card details is know as what?	Phishing email
What is Python an example of?	Programming Language



Year 7 IT - Summer Term 3b



Week 1		Week 2		Week 3		Week 4	
Questions	Answers	Questions	Answers	Questions	Answers	Questions	Answers
What is a Logo?	An image that represents an organisation	Why should we refine our search criteria?	So that we get more accurate results	What is a wireframe design?	A basic design plan made up of boxes and text	When we are designing a poster, who should we be thinking about?	Target Audience
Why do brands use a logo?	To help them stand out from other companies and for people to recognise them	True or False? All information we can gather online is true	False	Name one key design idea that we need to think about when making a poster	What images to use, what font to use, what colours to use, where to place things on the poster	True or false? You need to get feedback on your poster design before you hand in your final design	True
What is the name given to the set of colours used by a brand?	Colour Scheme or Brand style	Why do we annotate designs?	So we can explain why we have made certain design decisions	Why is it important to check the images we choose for a poster?	We need to check that they are appropriate, relevant and improve the design	True or false? The final poster design must match your first drawn designs or wireframe.	False
When making a poster, what is the first thing that you need to think about?	What is the purpose of the poster	True or False? You can search google and use dates to narrow the search criteria	True	What can i do on a poster to help people get more information without filling the poster with writing?	Use a QR code or website link that people can go to	When using online sources to help us make our poster, what is important to check about the sources?	Who wrote them, the data they were published, the reason they were published
I am making a poster to promote a new TV show for young children. Should I include lots of text, or lots of images?	Lots of images, it will help get their attention.	Give one example of why a company would create a poster?	To promote their company, To provide information to their customers	True or false? A good poster always uses lots of different colours	False	Why is it important to stick to a brands colour scheme when creating a poster	So that it is easier to identify which brand or product the poster is about
Week 5		Week 6		Week 7			
Questions	Answers	Questions	Answers	Questions	Answers		
What is the name of the website we are using to create our designs?	Canva	What are the best two places to get feedback on your work so far?	Teacher, other students in the group	True or False? Your poster will be identical to your first design ideas?	False		
When evaluating my poster design, what do I need to consider?	The requirements that were given to me - what key elements need to be included	True or False? A background image should be used on a poster to make it stand out.	False	True or False? All of our posters will look the same at the end of the project.	False		
True or False? My poster needs to have images or text filling all the available space	False	True or False? Information that is online is all up to date	False	Name two ways that we could direct people to a website	Add a website link or QR code		
True or False? Every image available on the internet is copyright free	False	When giving feedback to someone, what should you think about?	Being supportive, suggesting changes, not being too critical	What other printable types of promotion could we use instead of a poster?	Leaflet or vouchers		
How can we use our wireframe to help us create our poster if we have changed our mind on the layout?	We can see what we wanted to include. We can identify what pieces of content need to stay close together	How can you give feedback on canva?	Annotate parts of the poster, like digital post-it notes				

Year 7 Music - Summer Term 3a

Week 1		Week 2		Week 3		Week 4	
Questions	Answers	Questions	Answers	Questions	Answers	Questions	Answers
Which musical element means the highness or lowness of a sound?	Pitch	<p>Please answer at least 15 questions from the online link</p> <p>https://www.musictheory.net/exercises/note</p>		Which musical element means the length of sounds?	Rhythm	<p>Please answer at least 15 questions from the online link</p> <p>https://www.musictheory.net/exercises/keyboard</p>	
What do you call the 5 lines and 4 spaces which we draw musical notes on?	Stave			What is the curly sign used at the start of a piece of music which indicates notes played at a higher pitch?	Treble Clef		
How many beats does a semibreve last?	4 beats			How many beats does a minim last?	2 beats		
Where would you find 'C' on a keyboard?	On the left of the two black keys			What note would be in between the TWO black keys of the keyboard?	D		
The musical alphabet ends on which note?	G			When there are no sounds in music, what are used in place of notes?	Rests (silence)		
Week 5							
Questions	Answers						
Which musical element means the speed of a piece of music?	Tempo						
What is the easy way of remembering the notes in the SPACES of the stave?	FACE						
How many beats does a crotchet last?	1 beat						
Which musical element means the sounds that are used?	Instrumentation, timbre or sonority.						
How many beats does a semiquaver last?	Quarter of a beat						

Year 7 Music - Summer Term 3b

Week 1		Week 2		Week 3		Week 4	
Questions	Answers	Questions	Answers	Questions	Answers	Questions	Answers
Which musical element means the volume of a sound?	Dynamics	<p>Please answer at least 15 questions from the online link</p> <p>https://www.musictheory.net/exercises/note-construction</p>		Fanfare instrumentation is usually percussion and which other musical family?	Brass	<p>Please answer at least 15 questions from the online link</p> <p>https://www.musictheory.net/exercises/keyboard-reverse</p>	
What is the easy way of remembering the notes on the LINES of the stave?	Every Good Boy Deserves Football			Which texture is described as one instrument plays, then another responds with either the same or something similar?	Call and response		
How many beats does a quaver last?	Half a beat			Which instrumental family does the violin belong to?	String		
What are the lines which are an extension above or below the stave for higher or lower notes called?	Ledger lines			Which instrumental family does the clarinet belong to?	Woodwind		
What does a 'dot' do to the length of a note?	Adds on half the value again.			Which texture is described as everyone playing the same thing at the same time?	Unison		
Week 5		Week 6		Week 7			
Questions	Answers	Questions	Answers	Questions	Answers		
Which texture is described as both melodies playing the same rhythm, but pitches moving in opposite directions?	Contrary motion	<p>Please answer at least 15 questions from the online link</p> <p>https://www.musictheory.net/exercises/note</p>		Which musical element means the highness or lowness of a sound?	Pitch		
Which texture is described as two parts playing the same rhythm but with different pitches?	Harmony			Which musical element means the length of sounds?	Rhythm		
Which instrumental family does the tambourine belong to?	Percussion			Which musical element means the speed of a piece of music?	Tempo		
Which texture is described as two instruments playing the same thing, but starting at different times?	Canon			What is the easy way of remembering the notes in the SPACES of the stave?	FACE		
Which instrumental family does the trumpet belong to?	Brass			What is the easy way of remembering the notes on the LINES of the stave?	Every Good Boy Deserves Football		