



# KS4 options information booklet

## BTEC Tech award in **animal care** level 1/2



## Overview of the course

The animal care BTEC level 1 / level 2 Tech Award is an accredited course from Pearson Education. Although this course has only recently been offered as an option at Bishops, this BTEC qualification is recognised by both employers and other education institutions.

The course is for students who enjoy working with animals and is designed to give an introductory overview to some of the key principles, knowledge, understanding and skills relevant to the animal care sector. It is a 2-year course, with 5 hours of lesson time a fortnight. The learning will mainly take place in the classroom with a mixture of teacher led content, independent research and practical skills with our classroom animals.

## Aims of the course

The aims of the course are to inspire and enthuse learners to consider a career in the animal care sector as well as developing personal skills, such as self-management and communication, through a practical and skills-based approach to learning and assessment.

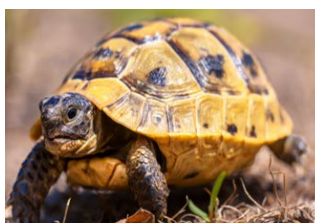
The qualification recognises the value of learning skills, knowledge and vocational attributes to complement GCSEs. The qualification will broaden students' experience and understanding of the varied progression options available to them.

## Animals the course covers

The groups of animals that the exam board require the students to have experience of are: -

- Smaller/companion animals (dogs, rabbits, guinea pigs, hamsters, etc.)
- Reptiles (lizards, snakes, tortoises, etc.)
- Birds (ducks, budgerigars, cockatiels, chickens, etc.)
- Invertebrates (giant land snails, stick insects, etc.)
- Large/livestock animals (pigs, sheep, goats, cattle, etc.)

Here are our school animals that the students will care for.



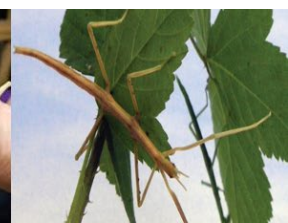
**Hermione Hunter  
Tortoise**



**Billy & Bobby Bishop  
Guinea pigs**



**Sheldon Stratford  
African land snail**



**Colin, Clive and Co.  
Coppack  
Stick insects**



**Lily and Lola Lane  
Gerbils**



**Winifred Windsor  
Russian dwarf hamster**



**Gracie Grosvenor  
Crested gecko**



**Dug and Dave Dee  
Pearlscale fish**

As we currently have no livestock animals or birds on site students will take several trips to farms, animal shelters and zoos during the 2 years so they can gain knowledge of how to handle, prepare accommodation and assess health of these groups of animals.

# Curriculum mapping

## Year 10

Component 1: Animal Handling – *Internally assessed assignment set by exam board.*

The students will learn about the normal behaviour of different species of animals, factors that affect an animal's behaviour, the practical application of safe handling and restraining techniques for different animals. *Worth 30% of course grade*

Component 2: Animal Accommodation – *Internally assessed assignment set by exam board.*

The students will learn about animal welfare needs, the accommodation choices for different species of animals, how to set up, maintain and clean animal accommodation. *Worth 30% of the course grade*

## Year 11

Component 3: Animal Health and Welfare – *Assessed externally through an exam.*

The students will learn about Animal Health and Welfare, including signs of ill health, the causes, transmission and treatment of common diseases in animals; the different health and monitoring checks that need to be carried out and why; the use of animals in society; and the related ethical and legal aspects. *Worth 40% of the course grade*

## Course grades

BTEC qualifications are graded and certificated on a seven-grade scale, equivalent GCSE 9-1 levels below:

<b>BTEC tech award grade</b>	<b>Level 2 Distinction*</b>	<b>Level 2 Distinction</b>	<b>Level 2 Merit</b>	<b>Level 2 Pass</b>	<b>Level 1 Distinction</b>	<b>Level 1 Merit</b>	<b>Level 1 Pass</b>
<b>Equivalent GCSE level 1-9</b>	8 / 9	7	5 / 6	4	3	2	1

## Progression Opportunities

BTEC qualifications are recognised by employers and education institutions and therefore support progression into apprenticeships, specialised Level 3 BTEC qualifications or A level courses.

Career opportunities in the animal care sector, dependent on qualifications gained, include Veterinarian, Veterinary nurse, Animal Care Assistant, Animal Welfare Officer, Animal Trainer, Groomer.

## Animal care staff

Mrs C Woods – Animal care teacher and course coordinator

Mrs R Chadburn – Animal care teaching assistant

## Further information

You can find further information about the course including the full specification on the exam boards website: <https://qualifications.pearson.com/en/qualifications/btec-tech-awards/animal-care-2022.html> Alternatively for specific questions about how the course is taught at Bishops you can contact Mrs Woods via email [cwoods@bishopschester.co.uk](mailto:cwoods@bishopschester.co.uk)