



THE BISHOPS' BLUE COAT CHURCH OF ENGLAND HIGH SCHOOL

Safeguarding Children in Education Policy

Is this policy statutory?	Yes
Review Period	Annually
Date of approval	September 2023

Contents

1.	Introduction	4
	School Commitment	4
	Duties	5
2.	School responsibilities	6
3.	Responsibilities of the Designated Safeguarding Lead and Deputy Lead	7
	Action following a child protection referral	9
	Raising Awareness	9
	Training	10
4.	Roles and Responsibilities of the Headteacher	11
5.	Roles and Responsibilities of the Governing Body	12
6.	Identifying Concerns.....	12
7.	Indicators of Abuse of Neglect	13
8.	Safeguarding Issues	14
	Safeguarding Students/Students Who Are Vulnerable to Extremism	14
	Radicalisation and Extremism.....	14
	Safeguarding pupils/students who are vulnerable to exploitation	15
	Child Sexual Exploitation	15
	Child Criminal Exploitation	16
	County Lines	16
	Children with Family Members in Prison.....	16
	Youth Produced Sexual Imagery/Sharing of Nudes or Semi-Nude Images/Videos	18
	Domestic Abuse	24
	Child Trafficking and Modern Slavery	25
	Mental Health	26
	Self-harm	27
9.	Safeguarding pupils/students who are victims of child on child abuse	28
	Bullying (including Cyberbullying)	28
	Child Sexual Exploitation (CSE)	29
	Gang Activity and Youth Violence	30
10.	The role of the form tutor	30

11.	Disclosure.....	31
12.	Confidentiality.....	31
13.	Records and Monitoring	32
14.	Supporting children	33
15.	Early Intervention and Prevention within Safeguarding.....	35
	Young Carers	35
16.	Recruitment	35
17.	Volunteers.....	36
18.	Safe Staff.....	36
19.	Conduct of Staff.....	37
	Allegations	38
20.	Supporting Staff	39
21.	Photographing Children	39
22.	Before and After School Activities and Contracted Services	40
23.	Complaints and Compliments	40
24.	Additional information for parents	40
25.	Links to other School policies.....	41
26.	Appendices.....	42
	Appendix 1 - Safeguarding Summary Booklet	42
	Appendix 2 - Indicators of Vulnerability to Radicalisation	49
	Appendix 3 – Essential Contacts	51
	Appendix 4 - The Safe Transfer of Child Protection/Safeguarding Files	52
	Appendix 5 – LADO Allegation Against an Adult – Referral Form	53
	Appendix 6 - Sexual Violence and Sexual Harassment Flow-chart	57

1. Introduction

Our vision statement states that:

The Bishops' Blue Coat Church of England High School is an exciting place to be. We know, nurture, and inspire our community to be the best version of themselves through a better understanding of the Christian faith, our core values, and a rich set of opportunities. Students achieve academically, personally, and spiritually. Through their engagement in society, at Bishops' and beyond, our students make a positive difference through wise action, resilience, and a sense of responsibility. Our community is enabled to live a life guided by Jesus, to flourish and have "life in all its fullness" (John 10:10)

We believe that all people are made in the image of God and are unconditionally loved by God. Everyone is equal and we treat each other with dignity and respect and the safety, protection, and well-being of all in our school community is fundamental. Our school is a place where everyone should be able to flourish in a loving and hospitable community.

Safeguarding and promoting the welfare of children is defined as:

- Protecting children from maltreatment.
- Preventing impairment of children's mental and physical health or development.
- Ensuring children are growing up in circumstances consistent with the provision of safe and effective care.
- Taking action to enable all children to have the best outcomes.

Child Protection is a part of safeguarding and promoting welfare. It refers to the activity that is undertaken to protect specific children who are suffering, or are likely to suffer, significant harm.

Effective child protection is essential as part of wider work to safeguard and promote the welfare of children. However, all agencies and individuals should aim to proactively safeguard and promote the welfare of children so that the need for action to protect children from harm is reduced.

There are guiding principles that provide the foundation of our policy:

- Ensuring we practise safe recruitment in checking the suitability of staff and volunteers to work with children
- Raising awareness of safeguarding children and child protection
- Equipping children with the skills needed to keep them safe
- Developing and implementing procedures for identifying and reporting cases, or suspected cases of abuse
- Supporting students who have been abused in accordance with his/her child protection plan
- Establishing a safe environment in which children can learn and develop

School Commitment

The Bishops' Blue Coat Church of England High School is committed to creating and maintaining a safe learning environment for children and young people, identifying where there are child welfare concerns and taking action to address them, in partnership with families and other agencies. This policy reflects the policies

of Cheshire West's Safeguarding Children Partnership, <https://www.cheshirewestscp.co.uk/> and is in line with "Working Together to Safeguard Children" (2018)

The school will also contribute through the curriculum by developing children's understanding and awareness and promoting their resilience by providing a safe environment within schools. To create this safe environment the school has certain statutory duties and responsibilities set out within: Working Together to Safeguard Children" (2018) <https://www.gov.uk/government/publications/working-together-to-safeguard-children--2> and [Keeping Children Safe in Education \(2023\)](#)

- [The Education Act, 2002, HM Guidance;](#)
- [Keeping Children Safe in Education \(2023\)](#)
- [Working Together to Safeguard Children, 2018](#)
- [Sexual Violence and Sexual Harassment between children in schools and colleges 2021](#) (now contained within Keeping Children Safe in Education as statutory guidance)
- [The Statutory Framework for the Early Years Foundation Stage](#)

These duties are listed below:

Duties

To provide a safe environment the Governing Body, Headteacher and Designated Safeguarding Lead will:

- Ensure that everyone from the Designated Safeguarding Governor to the Designated Safeguarding Team and all members of the school community have appropriate safeguards and supports in place should they choose to raise safeguarding issues, however unusual or sensitive these may be.
- Cultivate an ethos within the school community where all adults feel comfortable and supported to bring safeguarding issues to the attention of the Headteacher and/or the Designated Safeguarding Lead and are able to pose safeguarding questions with "respectful uncertainty" as part of their shared responsibility to safeguard children.
- Establish and maintain an environment where children feel secure, are encouraged to talk without coercion and are listened to.
- Ensure children know that if they are worried, they can talk to adults in the school.
- Ensure that every effort is made to establish effective working relationships with parents and colleagues from other agencies and are fully committed to the provision of Early Help.
- Ensure all adults working with children are aware of the role of Cheshire West Safeguarding Children Board.
- Include opportunities in the Personal, Social and Health Education (PSHE) and Relationships and Sex education (RSE) curriculum for children to develop the skills they need to recognise and stay safe, and to assess and manage risk (including e-safety) as is appropriate to their age, stage of development and level of understanding.
- Take all reasonable measures to ensure risks of harm to children's welfare are minimised including online through filtering and monitoring.
- Take all appropriate actions to address concerns about the welfare of a child, working to local policies and procedures in full working partnership with families and agencies as far as possible.

- Ensure robust safeguarding arrangements are in place and embedded in the daily life and practice of the school.
- Promote student health and safety.
- Promote safe practice and challenge unsafe practice in line with procedure.
- Ensure that procedures are in place to deal with allegations of abuse against staff, supply staff and volunteers following HM Government Guidance Keeping Children Safe in Education, 2023, Part 4: Allegations of abuse made against teachers and other staff.
- Put in place and promote robust anti-bullying, including cyber bullying, homophobic, transphobic and hate crime, strategies.
- Meet the health needs of children with medical conditions.
- Provide first aid.
- Maximise school security.
- Tackle drugs and substance misuse.
- Provide support and planning for young people in custody and their resettlement back into the community.
- Work with all agencies with regard to missing children, anti-social behaviour/gang activity, child sexual and criminal exploitation, radicalisation and extremism, contextual safeguarding and violence/knife crime in the community.
- Tackle child on child abuse and sexual violence and sexual harassment through RSE/PSHE sessions, ensuring all pupils are aware of the school's zero tolerance position and how this will be managed through the school's behaviour policy and Sexual Violence and Harassment protocols (see Appendix 6) Additionally, all staff should be able to reassure victims that they are being taken seriously and that they will be supported and kept safe. A victim should never be given the impression that they are creating a problem by reporting abuse, sexual violence, or sexual harassment. Nor should a victim ever be made to feel ashamed for making a report.
- Ensure all staff are aware of contextual safeguarding (extra-familial harm) and the risks of abuse posed to children outside of the family context.

2. School responsibilities

The school will identify harm and maintain safety by:

- Everybody having a duty to safeguard children inside and outside the school environment including school trips, extended schools, activities and vocational placements.
- Involving parents and providing advice/guidance regarding safeguarding.
- Maintaining a child focus and listening to children.
- Recognising signs of concern, especially with children who may be vulnerable.
- Documenting and collating information on individual children to support early identification, referral and actions to safeguard and by ensuring these records follow the child throughout their educational career.
- Taking appropriate actions to address concerns about a child's welfare in partnership with other organisations and safeguarding agencies.
- Informing all staff and volunteers who the Designated Safeguarding Leads for Safeguarding are in school.

- Liaise with the HOD for Lessons for Life to raise awareness with children in what are and are not acceptable behaviours. Lessons for Life input will provide opportunities for children and young people to learn how to keep themselves safe, for example, by:
 - a. The availability of advice and support in their local area and online.
 - b. Recognising and managing risks in different situations, including on the internet.
 - c. Judging what kind of physical contact is acceptable and unacceptable.
 - d. Recognising when pressure from others, including people they know, threatens their personal safety and well-being.
 - e. Developing effective ways of resisting pressure.
 - f. Developing healthy relationships, including awareness of unhealthy relationships where domestic violence, bullying and abuse occur.
 - g. The availability of school health Advisor drop-ins, PSOs, via assemblies, signposting in lessons, via Safer Schools Partnerships, chaplaincy work, SRE advisors (CSCW).

Our school will ensure that students are made aware that information can be found at the following; CEOP, signposting websites such as Kooth, and services in assemblies, the pastoral hub, the School Health Advisor, the School Counsellor, the Chaplain, personal development days.

Our school's arrangements for consulting with and listening to pupils are pastoral system, student council, extended curriculum programme, Lessons for Life lessons.

We make students aware of these arrangements by signposting in form time and assemblies, Satchel One updates.

3. Responsibilities of the Designated Safeguarding Lead and Deputy Lead

An appropriate member of the school's leadership team has been assigned to the role of Designated Safeguarding Lead. They have received appropriate training and are supported in their role:

The current Designated Safeguarding Lead is Adrian Carr - Deputy Headteacher. He is supervised by Chris Woods, Safeguarding Governor.

Deputy Designated Safeguarding Leads have been appointed and will provide additional support to ensure the responsibilities for safeguarding children are fully embedded within the school ethos and that specific duties are discharged. This will entail supporting the Designated Safeguarding Lead in dealing with referrals, attending case conferences, and supporting the child/children. They have received appropriate training and are supported in their role. The current Deputy Designated Leads are Andy Owen Assistant Headteacher – Head of Sixth form and Liz Evans and Jo Evans Senior Pastoral Support Officers (job share). Deputy Designated Leads are supervised in this role by Adrian Carr.

We acknowledge the need for effective and appropriate communication between all members of staff in relation to safeguarding students. The Designated Safeguarding Lead will ensure a structured procedure within the school, which will be followed in cases of suspected abuse. The Designated Lead and the Deputy Designated Leads meet regularly to review safeguarding referrals, cases and highlight any concerns so these are effectively reviewed.

The Designated Safeguarding Lead and the Deputy Designated Safeguarding Leads are responsible for the following:

- Referring cases of suspected abuse or allegations to the relevant investigating agencies.
- Acting as a source of support, advice and expertise within the school when deciding on the most appropriate course of action by liaising with relevant agencies.
- Liaising with the Head Teacher to inform him/her of any issues and ongoing investigations. The Designated Safeguarding Lead will ensure there is always cover for this role on the school site in the event of their absence.
- Ensuring that a systematic means of monitoring children known or thought to be at risk of harm is in place and that the school contributes to assessments of need and actively supports multi-agency planning for those children.
- To help promote educational outcomes by sharing the information about the welfare, safeguarding and child protection issues that children, including children with a social worker, are experiencing, or have experienced, with teachers and school and college leadership staff. Their role could include ensuring that the school or college, and their staff, know who these children are, understand their academic progress and attainment and maintain a culture of high aspirations for this cohort; supporting teaching staff to identify the challenges that children in this group might face and the additional academic support and adjustments that they could make to best support these children
- Taking 'lead responsibility' for the implementation of the school's filtering and monitoring procedures, working with the Data and Systems Manager and IT Support team to ensure these are followed and responded to accordingly in line with [government guidance](#) and paragraph 141 of [KSCIE 2023](#).

Following any information raising concern, the Designated Safeguarding Lead or Deputy will consider:

- any urgent medical needs of the child
- the immediate safety and wellbeing of the child
- discussing the matter with other agencies currently known to be involved with the child and family
- the child's wishes and feelings

Then decide:

- wherever possible, to talk to parents, unless to do so may place a child at risk of significant harm, impede any police investigation and/or place the member of staff or others at risk
- whether to make a child protection referral to Integrated Access Referral Team (I-ART) because a child is suffering or is likely to suffer significant harm and if this needs to be undertaken immediately. This can be accessed via

<https://earlyhelpandpreventiononline.cheshirewestandchester.gov.uk/web/portal/pages/home>

Or

- not to make a referral at this stage
- if further monitoring is necessary
- If it would be, appropriate to invite the parent or carer to engage with a Team Around the Family assessment and/or make a referral for other services.

All information and actions taken, including the reasons for any decisions made, will be fully documented on the child's safeguarding file held on CPOMS.

- The Designated Safeguarding Lead is not responsible for dealing with allegations made against members of staff. This is the responsibility of the Headteacher who will inform the Local Authority Designated Officer (DO).

Paul Jenkins The Children's Safeguarding Unit

4, Civic Way [Floor 4]

Ellesmere Port

Cheshire

Tel: 0151 337 4570

Fax: 0151 355 4692

safeguardinglado@cheshirewestandchester.gov.uk

Allegation against an adult procedure

<https://www.cheshirewestscp.co.uk/wp-content/uploads/2019/03/Managing-Allegations-Procedure-March-2019.pdf>

Referral form

<https://www.cheshirewestscp.co.uk/policy-and-procedures/allegations-management-lado/>

Action following a child protection referral

The Designated Safeguarding Lead or other appropriate member of staff will:

- make regular contact with the allocated social worker or team manager in the event of absence
- wherever possible, contribute to the strategy discussion
- provide a report for, attend, and contribute to any subsequent child protection conference
- if the child or children are made the subject of a child protection plan, contribute to the child protection plan, and attend core group meetings and review conferences
- endeavour to share all reports with parents prior to meetings
- where in disagreement with a decision made by Children's Social Care e.g. not to apply child protection procedures or not to convene a child protection conference, follow the formal Escalation Process in respect of resolving professional disagreements/escalation process:
<https://www.cheshirewestscp.co.uk/policy-and-procedures/escalation-and-resolution-policy/>
- where a child subject to a child protection plan moves from the school or goes missing, immediately inform i-ART (0300 123 7047).

Raising Awareness

- Working with the governing body to ensure that the school's Safeguarding Policy is updated and reviewed annually.
- Ensuring that, in order to avoid conflict and mistrust, parents are aware that referrals may be made and of the role of the school.
- Ensuring that when children leave the school, their Safeguarding/Child Protection File is discussed as soon as possible with the Designated Safeguarding Lead at the new school.
- Making sure that the Safeguarding/Child Protection File is transferred separately from the main pupil file within 5 days of transfer; It should be posted recorded delivery to the Designated Safeguarding Lead at the new school, sent electronically via CPOMs or delivered directly by hand and a signature received, unless the child is leaving year 11 and not going to a further education setting, in which case the file should be retained by the current school for a period stipulated in current statutory guidance.
- Where the new school is not known, alerting the Education Welfare Service at Cheshire West and Chester Council so that the child's name can be included on the database for missing students and appropriate action taken to ascertain the safety of the child.
- Cascading safeguarding advice and guidance issued by Cheshire West Safeguarding Children Board and government guidance and legislation
- Engaging students with safeguarding messages through form time, Satchel One, personal development days, assemblies, and the wider curriculum.

Training

The Designated Safeguarding Lead and the Deputy Designated Leads need to attend the multi-agency Level 3 course in Safeguarding. In addition, members of the pastoral support team will also receive this training to help support their role. This training then needs to be updated by attending a refresher course, every **two years**, unless the Designated or Deputy Designated Safeguarding Lead feels they require a repeat of the full course.

This will enable more time to attend additional courses in areas such as Child Sexual Exploitation, Neglect, County Lines and Domestic Abuse.

The Level 3 training will enable the Designated or Deputy Designated Safeguarding Lead to:

- Recognise how to identify signs of abuse and when it is appropriate to make a referral by using the Continuum of Need thresholds.
- Have a working knowledge of how to support the Team Around the Family, and the work of Cheshire West Safeguarding Children Board
- operates, how a child protection case conference is conducted, and be able to attend and contribute effectively to all planning meetings when required to do so.
- Be able to keep detailed, accurate and secure written records of referrals/concerns.

The Designated and Deputy Designated Safeguarding Leads will ensure **all** staff and **all** members of the governing body have undertaken appropriate safeguarding training.

All staff and governors will be expected to undergo endorsed Basic Awareness in Safeguarding training within the first term of their employment/placement/position, which will be refreshed on a regular basis (at least every 3 years), to enable them to understand and fulfil their safeguarding responsibilities effectively.

In addition to their formal training, all staff members will receive regular safeguarding and child protection updates including online safety, (for example via e-bulletins, meeting other designated safeguarding leads, or taking time to read and digest safeguarding developments), at regular intervals, but at least annually, to keep up with any developments relevant to their role.

All staff and volunteers, especially new or part-time staff who may work with different educational settings, will:

- Receive a copy of a safeguarding summary document (Appendix 1) prior to starting work
- Receive induction training to ensure that staff
 - Have an overview of the organisation
 - Understand its purpose, values, services, and structure
- Be able to recognise/identify signs of abuse which may include:
 - significant changes in children's behaviour.
 - deterioration in children's general well-being; including mental health
 - unexplained bruising, marks or signs of possible abuse or neglect.
 - children's comments which give cause for concern.
 - any reasons to suspect neglect or abuse outside the setting, for example in the child's home.and/or
 - inappropriate behaviour displayed by other members of staff, or any other Lead working with the children. For example, inappropriate sexual comments; excessive one-to-one attention beyond the requirements of their usual role and responsibilities; or inappropriate sharing of personal information (e.g. phone numbers, email, social networking) or images.
- Know that they must report any concerns immediately they arise and to whom and are aware of the whistle-blowing policy
- Understand confidentiality issues.

4. Roles and Responsibilities of the Headteacher

The Headteacher will ensure that:

- The policies and procedures adopted by the Governing Body are fully implemented and followed by all staff, so that everyone knows what to do if concerned about a child.
- Sufficient resources and time are allocated to enable the Designated and Deputy Designated Safeguarding Leads and other staff to discharge their responsibilities, including undertaking the Lead Professional role in the Team Around the Family, taking part in strategy discussions and other inter-agency meetings, and contributing to the assessment of children.
- All staff and volunteers feel able to raise concerns about poor or unsafe practice in regard to children, and such concerns are addressed sensitively and effectively in a timely manner in accordance with agreed whistle-blowing policies.
- They personally, along with other selected senior leaders and governors undertake safer recruitment training in order to comply with the statutory requirement to have a trained Lead on every recruitment panel.
- Allegations against a member of staff are referred in a timely manner to the Local Authority Designated Officer (LADO) if appropriate.

5. Roles and Responsibilities of the Governing Body

The Governing body is collectively responsible for the schools' safeguarding arrangements and ensuring that all staff are aware of their safeguarding responsibilities. The Designated Safeguarding Governor will undertake initial Safeguarding training to understand their Role and Responsibilities. All governors shall undertake the Basic Awareness Safeguarding training with their school.

Allegations of abuse made against the Headteacher are reported to the Chair of Governors and referred to the Local Authority Designated Officer (LADO).

The Governing Body will ensure that:

- Safeguarding arrangements are fully embedded within the school's ethos and reflected in the school's day to day safeguarding practices.
- Sufficient governors are trained in safer recruitment practices in order that permanent appointments can be adequately supported.
- The school has effective policies and procedures in place in accordance with this policy, and school's compliance with them is monitored.
- There are policies and procedures in place for dealing with complaints and/or allegations against staff, including the Headteacher and any subsequent staff disciplinary hearings.
- There is a Designated Safeguarding Governor to champion safeguarding issues within the school, to liaise with the Headteacher/Designated Safeguarding Lead, and to provide information and reports to the Governing Body. The Designated Safeguarding Governor will be supported by the Chair of Governors.
- The Headteacher, and all staff who work with children, will undertake a full and endorsed Basic Awareness Safeguarding training regularly (at least every 3 years) and have access to regular safeguarding and child protection updates (for example, via email, e-bulletins, staff meetings), as required, but at least annually, to provide them with relevant skills and knowledge to safeguard children effectively.
- The Designated and Deputy Designated Safeguarding Leads attend at least a minimum of Level 3 multi-agency course every two years.
- Temporary staff, volunteers and other regular visitors to the school who work with children are made aware of the school's arrangements for safeguarding and their responsibilities.

6. Identifying Concerns

Teachers and other adults in school are well placed to observe any physical, emotional, or behavioural signs, which indicate that a child may be suffering significant harm. The relationships between staff, students, parents, and the public, which foster respect, confidence, and trust, can lead to disclosures of abuse, and/or school staff being alerted to concerns. If concerns are identified, the child may be spoken to in order to ascertain whether abuse is occurring and may be done without prior consent from the child's parent/carer because the member of staff has a duty of care under 'loco parentis'. This would also be the case if the child is a witness to the abuse of another child or children e.g., bullying.

7. Indicators of Abuse of Neglect

A child: As in the Children Act of 1989 and 2004, a child is anyone who has not yet reached his/her 18th birthday or in the case of disabled children 25 years.

Harm means ill-treatment or impairment of health and development, including, for example, impairment suffered from seeing or hearing the ill-treatment of another.

Development means physical, intellectual, emotional, social, or behavioural development.

Health includes physical and mental health.

Ill-treatment includes sexual abuse and other forms of ill-treatment which are not physical.

Abuse and Neglect are forms of maltreatment. Somebody may abuse or neglect a child by inflicting harm or failing to act to prevent harm. Children may be abused in a family or in an institutional or community setting, by those known to them, or, more rarely, by a stranger. Abuse can take place wholly online, or technology may be used to facilitate offline abuse. They may be abused by an adult or adults or another child or children.

Physical Abuse may involve the hitting, shaking, throwing, poisoning, burning, or scalding, drowning, suffocating, or otherwise causing physical harm to a child.

Physical harm may also be caused when a parent or carer fabricates the symptoms of, or deliberately induces illness in a child.

Sexual Abuse involves forcing or enticing a child or young person to take part in sexual activities, not necessarily involving violence, whether or not the child is aware of what is happening. These activities may involve physical contact, including penetrative (e.g. rape or oral sex) or non-penetrative acts such as masturbation, kissing, rubbing and touching outside of clothing. They may include non-contact activities, such as involving children looking at or in the production of, sexual images, watching sexual activities, or encouraging children to behave in sexually inappropriate ways or grooming a child in preparation for abuse (including via the internet). Sexual abuse can take place online, and technology can be used to facilitate offline abuse. Sexual abuse is not solely perpetrated by adult males. Women can also commit acts of sexual abuse, as can other children.

Emotional Abuse is the persistent emotional ill treatment of a child such as to cause severe and persistent adverse effects on the child's emotional development. It may involve:

- conveying to children that they are worthless or unloved, inadequate, or valued only insofar as they meet the needs of another person.
- not giving the child opportunities to express their views, deliberately silencing them or 'making fun' of what they say or how they communicate.
- age or developmentally inappropriate expectations being imposed on children.
- These may include interactions that are beyond the child's developmental capability, as well as overprotection and limitation of exploration and learning, or preventing the child participating in normal social interaction.
- It may involve seeing or hearing the ill-treatment of another.
- It may involve serious bullying (including cyber-bullying) causing children frequently to feel frightened or in danger, or the exploitation or corruption of children.

Neglect is the persistent failure to meet a child's basic physical and or psychological needs, likely to result in the serious impairment of the child's health or development. Neglect may occur during pregnancy because of maternal substance abuse.

Once a child is born, neglect may involve a parent or carer failing to:

- Provide adequate food, clothing or shelter including exclusion from home or abandonment.
- Protect a child from physical and emotional harm or danger.
- Ensure adequate supervision including the use of inadequate caretakers.
- Ensure access to appropriate medical care or treatment.
- It may also include neglect of, or unresponsiveness to, a child's basic emotional needs.

8. Safeguarding Issues

All staff have an awareness of safeguarding issues that can put children at risk of harm. Behaviours linked to issues such as drug taking and or alcohol misuse, deliberately missing education, and consensual and non-consensual sharing of nude and semi-nude images and/or videos can be signs that children are at risk. Other safeguarding issues all staff should be aware of include but are not limited to:

Safeguarding Students/Students Who Are Vulnerable to Extremism

Since 2010, when the Government published the Prevent Strategy, there has been an awareness of the specific need to safeguard children, young people, and families from violent extremism. There have been several occasions both locally and nationally in which extremist groups have attempted to radicalise vulnerable children and young people to hold extreme views including views justifying political, religious, sexist, or racist violence, or to steer them into a rigid and narrow ideology that is intolerant of diversity and leaves them vulnerable to future radicalisation.

The Bishops' Blue Coat CE High School values freedom of speech and the expression of beliefs/ideology as fundamental rights underpinning our society's values. Both students and teachers have the right to speak freely and voice their opinions. However, freedom comes with responsibility and free speech that is designed to manipulate the vulnerable or that leads to violence and harm of others goes against the moral principles in which freedom of speech is valued. Free speech is not an unqualified privilege; it is subject to laws and policies governing equality, human rights, community safety and community cohesion.

The current threat from terrorism in the United Kingdom may include the exploitation of vulnerable people, to involve them in terrorism or in activity in support of terrorism. The normalisation of extreme views may also make children and young people vulnerable to future manipulation and exploitation. The Bishops' Blue Coat CE High School is clear that this exploitation and radicalisation should be viewed as a safeguarding concern.

Radicalisation and Extremism

Definitions of radicalisation and extremism, and indicators of vulnerability to radicalisation are in Appendix 2.

The Bishops' Blue Coat Church of England High School seeks to protect children and young people against the messages of all violent extremism including, but not restricted to, those linked to Islamist ideology, or to Far

Right / Neo Nazi / White Supremacist ideology, Irish Nationalist and Loyalist paramilitary groups, and extremist Animal Rights movements.

The school governors, the Headteacher and the Designated Safeguarding Lead will assess the level of risk within the school and put actions in place to reduce that risk.

Our school, like all others, is required to identify a Prevent **Single Point of Contact** (SPOC) who will be the lead within the organisation for safeguarding in relation to protecting individuals from radicalisation and involvement in terrorism.

The SPOC for The Bishops' Blue Coat CE High School is Adrian Carr. The responsibilities of the SPOC are described in Appendix 2.

When any member of staff has concerns that a student may be at risk of radicalisation or involvement in terrorism, they should speak with the SPOC.

Numerous factors can contribute to and influence the range of behaviours that are defined as violent extremism, but most young people do not become involved in extremist action. For this reason, the appropriate interventions in any particular case may not have any specific connection to the threat of radicalisation, for example they may address mental health, relationship or drug/alcohol issues.

Safeguarding pupils/students who are vulnerable to exploitation

(Forced marriage, honour-based violence, female genital mutilation, sharing of nudes or semi-nude images/videos, sexual violence and sexual harassment or trafficking and modern slavery).

Child Sexual Exploitation

Child sexual exploitation is a form of sexual abuse where children are sexually exploited for money, power, or status. It can involve violent, humiliating and degrading sexual assaults. In some cases, young people are persuaded or forced into exchanging sexual activity for money, drugs, gifts, affection, or status. Consent cannot be given, even where a child may believe they are voluntarily engaging in sexual activity with the Lead who is exploiting them. Child sexual exploitation does not always involve physical contact and can happen online. A significant number of children who are victims of sexual exploitation go missing from home, care, and education at some point. Some of the following signs may be indicators of sexual exploitation:

- Children who appear with unexplained gifts or new possessions.
- Children who associate with other young people involved in exploitation.
- Children who have older boyfriends or girlfriends.
- Children who suffer from sexually transmitted infections or become pregnant.
- Children who suffer from changes in emotional well-being.
- Children who misuse drugs and alcohol.
- Children who go missing for periods of time or regularly come home late.
- Children who regularly miss school or education or do not take part in education.

Child Criminal Exploitation

Child criminal exploitation. As set out in the Serious Violence Strategy, published by the Home Office, where an individual or group takes advantage of an imbalance of power to coerce, control, manipulate or deceive a child or young person under the age of 18 into any criminal activity (a) in exchange for something the victim needs or wants, and/or (b) for the financial or other advantage of the perpetrator or facilitator and/or (c) through violence or the threat of violence. The victim may have been criminally exploited even if the activity appears consensual. Child criminal exploitation does not always involve physical contact; it can also occur through the use of technology. Some of the following signs may be indicators of criminal exploitation:

- Persistently going missing from school or home and / or being found out-of-area.
- Unexplained acquisition of money, clothes, or mobile phones
- Excessive receipt of texts / phone calls
- Relationships with controlling / older individuals or groups
- Leaving home / care without explanation
- Suspicion of physical assault / unexplained injuries
- Parental concerns
- Carrying weapons
- Significant decline in school results / performance
- Gang association or isolation from peers or social networks
- Self-harm or significant changes in emotional well-being

County Lines

County Lines is a form of criminal exploitation whereby gangs and organised criminal networks involved in exporting illegal drugs into one or more importing areas within the UK, using dedicated mobile phone lines or other form of 'deal line'. They are likely to exploit children and vulnerable adults to move and store the drugs and money, and they will often use coercion, intimidation, violence (including sexual violence) and weapons.

Controlling behaviour is: a range of acts designed to make a person subordinate and/or dependent by isolating them from sources of support, exploiting their resources and capacities for personal gain, depriving them of the means needed for independence, resistance and escape and regulating their everyday behaviour.

Coercive behaviour is: an act or a pattern of acts of assault, threats, humiliation and intimidation or other abuse that is used to harm, punish, or frighten their victim. This includes issues of concern to black and minority ethnic (B&ME) communities such as so called 'honour based' violence, female genital mutilation (FGM) and forced marriage, and is clear that victims are not confined to one gender or ethnic group."

Children with Family Members in Prison

Approximately 200,000 children in England and Wales have a parent sent to prison each year. These children are at risk of a poor outcomes including poverty, stigma isolation and poor mental health.

<https://www.nicco.org.uk/> NICCO provides information designed to support professionals working with offenders and their children, to help mitigate negative consequences for those children.

HBA or FGM

HBA/Forced Marriage or FGM - So-called 'honour-based' abuse (HBA) encompasses crimes which have been committed to protect or defend the honour of the family and/or the community, including Female Genital Mutilation (FGM), forced marriage, and practices such as breast ironing. All forms of so called HBA are abuse (regardless of the motivation) and should be handled and escalated as such. If in any doubts staff should speak to the designated safeguarding lead. Professionals in all agencies, and individuals and groups in relevant communities, need to be alert to the possibility of a child being at risk of HBA, or already having suffered HBA.

There are a range of potential indicators that a child may be at risk of HBA. Guidance on the warning signs that FGM or forced marriage may be about to take place, or may have already taken place, can be found on pages 38-41 of the https://www.gov.uk/government/uploads/system/uploads/attachment_data/file/512906/Multi_Agency_Statutory_Guidance_on_FGM_-_FINAL.pdf (pages 59-61 focus on the role of schools and colleges) and pages 13-14 of the https://www.gov.uk/government/uploads/system/uploads/attachment_data/file/322307/HMG_MULTI_AGENCY_PRACTICE_GUIDELINES_v1_180614_FINAL.pdf.

If staff have a concern regarding a child that might be at risk of HBA they should activate local safeguarding procedures, using existing national and local protocols for multiagency liaison with police and children's social care. Where FGM has taken place, since 31 October 2015 there has been a mandatory reporting duty placed on teachers that requires a different approach (see following section).

FGM mandatory reporting duty FGM comprises all procedures involving partial or total removal of the external female genitalia or other injury to the female genital organs. It is illegal in the UK and a form of child abuse with long-lasting harmful consequences.

Section 5B of the Female Genital Mutilation Act 2003 (as inserted by section 74 of the Serious Crime Act 2015) places a statutory duty upon teachers along with regulated health and social care professionals in England and Wales, to report to the police where they discover (either through disclosure by the victim or visual evidence) that FGM appears to have been carried out on a girl under 18. Those failing to report such cases will face disciplinary sanctions. It will be rare for teachers to see visual evidence, and they should not be examining pupils, but the same definition of what is meant by "to discover that an act of FGM appears to have been carried out" is used for all professionals to whom this mandatory reporting duty applies. Information on when and how to make a report can be found at- <https://www.gov.uk/government/publications/mandatory-reporting-of-female-genital-mutilation-procedural-information>

Teachers must personally report to the police cases where they discover that an act of FGM appears to have been carried out. Unless the teacher has a good reason not to, they should also still consider and discuss any such case with the school or college's designated safeguarding lead and involve children's social care as appropriate. The duty does not apply in relation to at risk or suspected cases (i.e. where the teacher does not discover that an act of FGM appears to have been carried out, either through disclosure by the victim or visual evidence) or in cases where the woman is 18 or over. In these cases, teachers should follow local safeguarding procedures. The following is a useful summary of the FGM mandatory reporting duty: https://www.gov.uk/government/uploads/system/uploads/attachment_data/file/496415/6_1639_HO_SP_FGM_mandatory_reporting_Fact_sheet_Web.pdf

Forced Marriage

Forcing a person into a marriage is a crime in England and Wales. A forced marriage is one entered into without the full and free consent of one or both parties and where violence, threats or any other form of coercion is used to cause a Lead to enter into a marriage. Threats can be physical or emotional and psychological. A lack of full and free consent can be where a Lead does not consent or where they cannot consent (if they have learning disabilities, for example). Nevertheless, some communities use religion and culture as a way to coerce a Lead into marriage. Since February 2023 it has been a crime to carry out any conduct whose purpose is to cause a child to marry before their eighteenth birthday, even if violence, threats or another form of coercion are not used. Schools and colleges can play an important role in safeguarding children from forced marriage.

The Forced Marriage Unit has published

https://www.gov.uk/government/uploads/system/uploads/attachment_data/file/322307/HMG_MULTI_AGE_NCY_PRACTICE_GUIDELINES_v1_180614_FINAL.pdf, with pages 32-36 focusing on the role of schools and colleges. School and college staff can contact the Forced Marriage Unit if they need advice or information. Contact: 020 7008 0151 or email: fm@fco.gov.uk.

Serious Violence

All staff should be aware of the indicators, which may signal children are at risk from, or are involved with serious violent crime. These may include increased absence from school, a change in friendships or relationships with older individuals or groups, a significant decline in performance, signs of self-harm or a significant change in wellbeing, or signs of assault or unexplained injuries. Unexplained gifts or new possessions could also indicate that children have been approached by, or are involved with, individuals associated with criminal networks or gangs and may be at risk of criminal exploitation (see paragraphs 33-

Risk factors which increase the likelihood of involvement in serious violence, such as being male, having been frequently absent or permanently excluded from school, having experienced child maltreatment and having been involved in offending, such as theft or robbery.

Youth Produced Sexual Imagery/Sharing of Nudes or Semi-Nude Images/Videos

Whilst professionals refer to the issue as 'sexting' there is no clear definition of 'sexting'. Many professionals consider sexting to be 'sending or posting sexually suggestive images, including nude or semi-nude photographs, via mobiles or over the Internet.' Yet when young people are asked 'What does sexting mean to you?' they are more likely to interpret sexting as 'writing and sharing explicit messages with people they know'. Similarly, many parents think of sexting as flirty or sexual text messages rather than images.

This only covers the sharing of sexual imagery by young people. Creating and sharing sexual photos and videos of under-18s is illegal and therefore causes the greatest complexity for schools and other agencies when responding. It also presents a range of risks which need careful management.

On this basis current advice introduces the phrase 'youth produced sexual imagery' and uses this instead of 'sexting.' This is to ensure clarity about the issue's current advice addresses.

'Youth produced sexual imagery' best describes the practice because:

- 'Youth produced' includes young people sharing images that they, or another young person, have created of themselves.

- 'Sexual' is clearer than 'indecent.' A judgement of whether something is 'decent' is both a value judgement and dependent on context.
- 'Imagery' covers both still photos and moving videos (and this is what is meant by reference to imagery throughout the document).

The types of incidents which this covers are:

- A person under the age of 18 creates and shares sexual imagery of themselves with a child under the age of 18
- A person under the age of 18 shares sexual imagery created by another person under the age of 18 with a child under the age of 18 or an adult
- A person under the age of 18 is in possession of sexual imagery created by another person under the age of 18

For the best way to respond to these issues, staff should read the following advice:

<https://www.gov.uk/government/publications/sharing-nudes-and-semi-nudes-advice-for-education-settings-working-with-children-and-young-people>

In the incidence of a report of, or suspicion of youth produced sexual imagery then a member of the Safeguarding Team will isolate the device suspected of holding the youth produced sexual imagery. **No member of school staff will make any attempt to look at the phone to verify if suspected imagery is present on any platform but will contact the Police to review the phone.** The student's parents will also be informed and invited to attend to meet with the Police and the student.

Sexual Violence and Sexual Harassment – (see Dignity and Respect Policy)

Sexual violence and sexual harassment can occur between two children of any age and sex from primary to secondary stage and into colleges. It can also occur online. It can also occur through a group of children sexually assaulting or sexually harassing a single child or group of children.

Children who are victims of sexual violence and sexual harassment will likely find the experience stressful and distressing. This will, in all likelihood, adversely affect their educational attainment and will be exacerbated if the alleged perpetrator(s) attends the same school or college. Sexual violence and sexual harassment exist on a continuum and may overlap, they can occur online and face to face (both physically and verbally) and are never acceptable.

It is essential that all victims are reassured that they are being taken seriously and that they will be supported and kept safe. A victim should never be given the impression that they are creating a problem by reporting sexual violence or sexual harassment. Nor should a victim ever be made to feel ashamed for making a report.

Staff should be aware that some groups are potentially more at risk. Evidence shows girls, children with special educational needs and disabilities (SEND) and LGBT children are at greater risk. Staff should be aware of the importance of:

- challenging inappropriate behaviours.
- making clear that sexual violence and sexual harassment is not acceptable, will never be tolerated and is not an inevitable part of growing up.

- not tolerating or dismissing sexual violence or sexual harassment as “banter”, “part of growing up”, “just having a laugh” or “boys being boys”; and,
- challenging physical behaviours (potentially criminal in nature), such as grabbing bottoms, breasts, and genitalia, pulling down trousers, flicking bras and lifting up skirts. Dismissing or tolerating such behaviours risks normalising them.

What is sexual violence and sexual harassment?

- **Sexual violence**

It is important that school and college staff are aware of sexual violence and the fact children can, and sometimes do, abuse their peers and other children in this way and that it can happen both inside and outside of school/college. When referring to sexual violence we are referring to sexual violence offences under the Sexual Offences Act 2003 as described below:

- **Rape:** A person (A) commits an offence of rape if: he intentionally penetrates the vagina, anus, or mouth of another person (B) with his penis, B does not consent to the penetration and A does not reasonably believe that B consents.
- **Assault by Penetration:** A person (A) commits an offence if: s/he intentionally penetrates the vagina or anus of another person (B) with a part of her/his body or anything else, the penetration is sexual, B does not consent to the penetration and A does not reasonably believe that B consents.
- **Sexual Assault:** A person (A) commits an offence of sexual assault if: s/he intentionally touches another person (B), the touching is sexual, B does not consent to the touching and A does not reasonably believe that B consents. (Schools should be aware that sexual assault covers a very wide range of behaviour so a single act of kissing someone without consent or touching someone's bottom/breasts/genitalia without consent, can still constitute sexual assault.)
- **Causing someone to engage in sexual activity without consent:** A person (A) commits an offence if: s/he intentionally causes another person (B) to engage in an activity, the activity is sexual, B does not consent to engaging in the activity, and A does not reasonably believe that B consents. (This could include forcing someone to strip, touch themselves sexually, or to engage in sexual activity with a third party.)

What is consent?

Consent is about having the freedom and capacity to choose. Consent to sexual activity may be given to one sort of sexual activity but not another, e.g. to vaginal but not anal sex or penetration with conditions, such as wearing a condom. Consent can be withdrawn at any time during sexual activity and each time activity occurs. Someone consents to vaginal, anal, or oral penetration only if s/he agrees by choice to that penetration and has the freedom and capacity to make that choice. Further information about consent can be found here: [Rape Crisis England & Wales - Sexual consent](#)

- a child under the age of 13 can never consent to any sexual activity.
- the age of consent is 16.
- sexual intercourse without consent is rape.

Sexual harassment

When referring to sexual harassment we mean 'unwanted conduct of a sexual nature' that can occur online and offline and both inside and outside of school/college. When we reference sexual harassment, we do so in the context of child-on-child sexual harassment. Sexual harassment is likely to: violate a child's dignity, and/or make them feel intimidated, degraded, or humiliated and/or create a hostile, offensive or sexualised environment.

Whilst not intended to be an exhaustive list, sexual harassment can include:

- **sexual comments**, such as: telling sexual stories, making lewd comments, making sexual remarks about clothes and appearance and calling someone sexualised names.
- **sexual “jokes” or taunting.**
- **physical behaviour**, such as: deliberately brushing against someone, interfering with someone’s clothes (schools and colleges should be considering when any of this crosses a line into sexual violence - it is important to talk to and consider the experience of the victim) and displaying pictures, photos, or drawings of a sexual nature; and
- **online sexual harassment.** This may be standalone, or part of a wider pattern of sexual harassment and/or sexual violence. It may include:
 - **consensual and non-consensual sharing of nudes and semi-nudes images and/or videos.** As set out in [UKCIS Sharing nudes and semi-nudes: advice for education settings working with children and young people](#) (which provides detailed advice for schools and colleges) taking and sharing nude photographs of U18s is a criminal offence;
 - o sharing of unwanted explicit content.
 - o upskirting (is a criminal offence¹⁴¹).
 - o sexualised online bullying.
 - o unwanted sexual comments and messages, including, on social media.
 - o sexual exploitation; coercion and threats.

Upskirting

The Voyeurism (Offences) Act 2019, which is commonly known as the Upskirting Act, came into force on 12 April 2019. ‘Upskirting’ is where someone takes a picture under a person’s clothing (not necessarily a skirt) without their permission and or knowledge, with the intention of viewing their genitals or buttocks (with or without underwear) to obtain sexual gratification, or cause the victim humiliation, distress, or alarm. It is a criminal offence. Anyone of any sex, can be a victim.

The response to a report of sexual violence or sexual harassment

The initial response to a report from a child is incredibly important. How the school or college responds to a report can encourage or undermine the confidence of future victims of sexual violence and sexual harassment to report or come forward. Schools and colleges not recognising, acknowledging or understanding the scale of harassment and abuse and/or downplaying of some behaviours, for example dismissing sexual harassment as “just banter”, “just having a laugh”, “part of growing up” or “boys being boys” can actually lead to a culture of unacceptable behaviours, an unsafe environment for children and in worst case scenarios a culture that normalises abuse leading to children accepting it as normal and not coming forward to report it.

It is essential that all victims are reassured that they are being taken seriously and that they will be supported and kept safe. A victim should never be given the impression that they are creating a problem by reporting sexual violence or sexual harassment. Nor should a victim ever be made to feel ashamed for

making a report. If staff have a concern about a child or a child makes a report to them, they should follow the referral process within the school. As is always the case, if staff are in any doubt as to what to do, they should speak to the designated safeguarding lead (or a deputy).

For the best way to respond to these issues, staff should read the following advice:

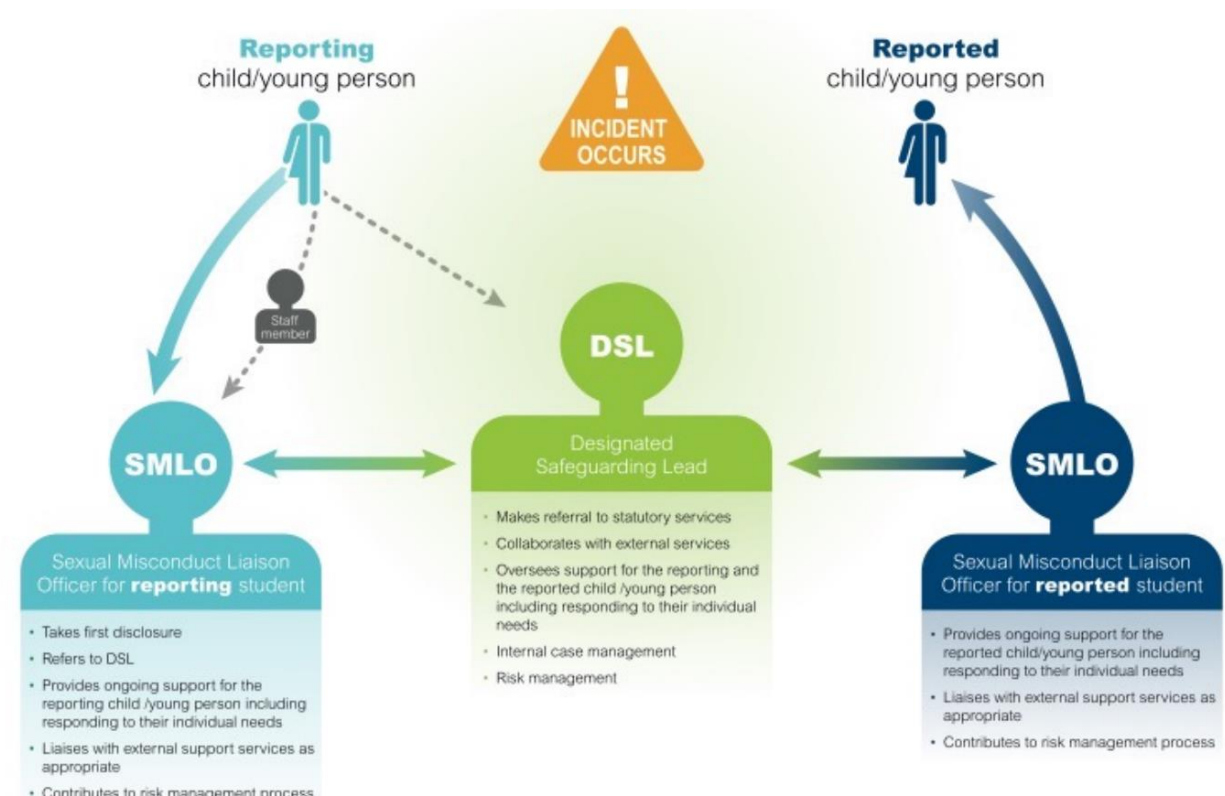
<https://www.gov.uk/government/publications/sexual-violence-and-sexual-harassment-between-children-in-schools-and-colleges> and refer to the school's separate Dignity and Respect Policy and in Appendix 6 - Sexual violence and sexual harassment flow-chart.

At the Bishops' Blue Coat CofE High School we have trained a number of pastoral staff as Sexual Misconduct Liaison Officers (SMLO) through LimeCulture. This NCFE qualification prepares staff to support young people who are alleged victims and perpetrators of sexual violence and sexual misconduct by following an agreed model for working- see Figure 2 below. The SMLO team is led by Deputy Safeguarding Leads; Liz Evans, Pastoral Manager and Andy Owen, Assistant Headteacher.

Figure 1



Figure 2



Domestic Abuse

The behaviour of a person (“A”) towards another person (“B”) is “domestic abuse” if—A and B are each aged 16 or over and are personally connected to each other, and the behaviour is abusive.

The behaviour is “abusive” if it consists of any of the following—

- physical or sexual abuse.
- violent or threatening behaviour.
- controlling or coercive behaviour.
- economic abuse (see subsection (4)).
- psychological, emotional or other abuse.

and it does not matter whether the behaviour consists of a single incident or a course of conduct.

“Economic abuse” means any behaviour that has a substantial adverse effect on B’s ability to—

- acquire, use, or maintain money or other property, or
- obtain goods or services.

For the purposes of the domestic abuse Act 2021 A’s behaviour may be behaviour “towards” B despite the fact that it consists of conduct directed at another person (for example, B’s child).

The Domestic abuse Act 2021 introduces the first ever statutory definition of domestic abuse and recognises the impact of domestic abuse on children, as victims in their own right, if they see, hear or experience the effects of abuse. The statutory definition of domestic abuse, based on the previous cross-government

definition, ensures that different types of relationships are captured, including ex-partners and family members. The definition captures a range of different abusive behaviours, including physical, emotional, and economic abuse and coercive and controlling behaviour. Both the person who is carrying out the behaviour and the person to whom the behaviour is directed towards must be aged 16 or over and they must be “personally connected” (as defined in section 2 of the 2021 Act).

Teenage relationship abuse is defined as a pattern of actual or threatened acts of physical, sexual, and / or emotional abuse, perpetrated by an adolescent (between the ages of 13 and 18) against a current or former partner. Abuse may include insults, coercion, social sabotage, sexual harassment, threats and / or acts of physical or sexual abuse. The abusive teen uses this pattern of violent and coercive behaviour, in a heterosexual or same gender relationship, in order to gain power and maintain control over the partner.

Our school recognises that abuse is abuse and it will never be tolerated or passed off as ‘banter’, “just having a laugh”, or “part of growing up”. We also recognise that child-on-child abuse, although more likely to be reported by girls as victims and boys as perpetrators, can be experienced by all genders or identities. All reports of abuse will be taken seriously.

We participate in the Operation Encompass scheme where schools are notified of Police attendance at Domestic Abuse reports. We treat this information in the strictest confidence and use it to support the young person/ people within a school setting.

Child Trafficking and Modern Slavery

Child trafficking and modern slavery are forms of child abuse where children are recruited, moved, or transported and then exploited, forced to work, or sold. Children are trafficked for sexual exploitation, benefit fraud, forced marriage, domestic servitude such as: cleaning, childcare, cooking, forced labour in factories or agriculture and criminal activity such as: pickpocketing, begging, transporting drugs, working on cannabis farms, selling pirated DVDs and bag theft.

Many children are trafficked into the UK from abroad, but children can also be trafficked from one part of the UK to another.

Trafficked children experience multiple forms of abuse and neglect. Physical, sexual, and emotional violence are often used to control victims of trafficking. Children are also likely to be physically and emotionally neglected.

Children are tricked, forced, or persuaded to leave their homes. Traffickers use grooming techniques to gain the trust of the child, family, or community. They may threaten families, but this is not always the case, they may promise children education or persuade parents their child can have a better future in another place. Sometimes families will be asked for payment towards the ‘service’ a trafficker is providing e.g. sorting out travel documentation or transport. Traffickers make a profit from the money a child earns through exploitation, forced labour or crime. Often this is explained as a way for a child to pay off a debt they or their family ‘owe’ to the traffickers. Although these are methods used by traffickers, coercion, violence or threats do not need to be proven in cases of child trafficking – a child cannot legally consent, so child trafficking only requires evidence of movement and exploitation.

- Our safeguarding policy, through the school’s values, ethos, and behaviour policies, provides the basic platform to ensure children and young people are given the support to respect themselves and others, stand up for themselves and protect each other.

- Our school keeps itself up to date on the latest advice and guidance provided to assist in addressing specific vulnerabilities and forms of exploitation.
- Our staff are supported to recognise warning signs and symptoms in relation to specific issues, include such issues in an age-appropriate way in their curriculum,
- Our school works with, and engages our families and communities to talk about such issues,
- Our staff are supported to talk to families about sensitive concerns in relation to their children and to find ways to address them together wherever possible.
- Our Designated Safeguarding Lead knows where to seek and get advice as necessary.
- Our school brings in experts and uses specialist material to support the work we do.

Mental Health

All staff should be aware that mental health problems can, in some cases, be an indicator that a child has suffered or is at risk of suffering abuse, neglect or exploitation. Only appropriately trained professionals should attempt to make a diagnosis of a mental health problem. Staff, however, are well placed to observe children day to day and identify those whose behaviour suggests they may be experiencing a mental health problem or be at risk of developing one.

Where children have suffered abuse and neglect, or other potentially traumatic adverse childhood experiences (ACEs), this can have a lasting impact throughout childhood, adolescence and into adulthood. It is key that staff are aware of how these children's experiences, can impact on their mental health, behaviour, and education.

If staff have a mental health concern about a child that is also a safeguarding concern, immediate action should be taken, following the Safeguarding policy, and speaking to the designated safeguarding lead or deputy.

There is a range of resource to support mental health and wellbeing at Bishops'. These include regular updates via form time, links to websites, use of Kooth, notices in assemblies. There are also trained Mental Health First Aiders who are available for students. The Sanctuary Space is also staffed throughout the school day for students to access if they are experiencing poor mental health. Schools and colleges can access a range of advice to help them identify children in need of extra mental health support and this includes working with external agencies. <https://westcheshirechildrenstrust.co.uk/new-ways-of-working/recovery-model/>

Self-harm

Self-harm is when you hurt yourself as a way of dealing with very difficult feelings, painful memories or overwhelming situations and experiences. Some people have described self-harm as a way to:

- express something that is hard to put into words
- turn invisible thoughts or feelings into something visible
- change emotional pain into physical pain
- reduce overwhelming emotional feelings or thoughts
- have a sense of being in control
- escape traumatic memories
- have something in life that they can rely on
- punish themselves for their feelings and experiences
- stop feeling numb, disconnected, or dissociated
- create a reason to physically care for themselves • express suicidal feelings and thoughts without taking their own life.

Ways people self-harm can include:

- cutting yourself
- poisoning yourself
- over-eating or under-eating
- exercising excessively
- biting yourself
- picking or scratching at your skin
- burning your skin
- inserting objects into your body
- hitting yourself or walls
- misusing alcohol, prescription, and recreational drugs
- pulling your hair
- having unsafe sex
- getting into fights where you know you will get hurt

9. Safeguarding pupils/students who are victims of child on child abuse

There is no clear definition of what child on child abuse entails. However, it can be captured in a range of different definitions:

- **Domestic Abuse:** relates to young people aged 16 and 17 who experience physical, emotional, sexual and / or financial abuse, and coercive control in their intimate relationships.
- **Child Sexual Exploitation:** captures young people aged under-18 who are sexually abused in the context of exploitative relationships, contexts and situations by a person of any age - including another young person.
- **Harmful Sexual Behaviour:** refers to any young person, under the age of 18, who demonstrates behaviour outside of their normative parameters of development (this includes but is not exclusive to abusive behaviours).
- **Serious Youth Crime / Violence:** reference to offences (as opposed to relationships / contexts) and captures all those of the most serious in nature including murder, rape and GBH between young people under-18.

Child on child abuse can refer to any of the above individually or as a combination, therefore professionals working with children and young people who are experiencing abuse from their peers and other children must respond to the needs of each of the definitions to uncover the level of complexity and respond in the most effective manner. It is possible that a young person may be sexually exploited in a gang related situation by their boyfriend or girlfriend.

See Appendix 8 for student friendly ‘**child on child abuse**’ policy.

Key Areas Where Child on Child Abuse Occurs:

Bullying (including Cyberbullying)

Bullying is defined as “behaviour by an individual or group, usually repeated over time, which intentionally hurts another individual or group either physically or emotionally”. Bullying often starts with trivial events and it is behaviour that hurts someone else - such as name calling, hitting, pushing, spreading hurtful and untruthful rumours, threatening, or undermining someone; mocking; making offensive comments; taking belongings; inappropriate touching; producing offensive graffiti; or always leaving someone out of groups. It can happen anywhere - at school, at home or online. It’s usually repeated over a long period of time and can hurt a child both physically and emotionally. A child that is being bullied can feel like there’s no escape because it can happen wherever they are, at any time of day or night.

There are many different forms of bullying:

- ‘**Cyberbullying**’: involves sending inappropriate or hurtful text messages, emails or instant messages, posting malicious material online (e.g. on social networking websites) or sending or posting offensive or degrading images and videos.
- **Racist and Religious Bullying:** A range of hurtful behaviour, both physical and psychological, that makes a person feel unwelcome, marginalised, excluded, powerless or worthless because of their colour, ethnicity, culture, faith community, national origin or national status.

- Sexual, Sexist and Transphobic Bullying: includes any behaviour, whether physical or nonphysical, where sexuality is used as a weapon by boys or girls.
- Homophobic Bullying: targets someone because of their sexual orientation (or perceived sexual orientation).
- Disablist Bullying: targets a young person solely based on their disability, this can include manipulative bullying where a perpetrator forces the victim to act in a certain way or exploiting a certain aspect of the victim's disability.

It is important to remember that bullying can also be a combination of the above. There has been much media attention surrounding children and young people who have committed suicide due to being bullied. Professionals must understand the damaging and at times fatal effects bullying can and does have on children and young people and be able to respond to it effectively.

Child Sexual Exploitation (CSE)

Many of the warning signs and indicators of CSE tend to refer to adult perpetrators, e.g., associations with older boyfriends / girlfriends, relationships or associations with risky adults and / or entering or leaving vehicles driven by unknown adults. As per the revised definition of CSE it "occurs where an individual or group takes advantage of an imbalance of power to coerce, manipulate or deceive a child or young person under the age of 18 into sexual activity". The key element of CSE is the imbalance of power and control within the exploitative relationship. Many children and young people are not aware of the exploitation as they have a genuine belief that they are loved by their boyfriend / girlfriend or are acting in accordance with their peers. Children and young people are often recruited into exploitation by those who they trust, those of a similar age and with similar hobbies, often the nature of child on child exploitation encompasses a sense of peer pressure and wanting to fit in. In child on child exploitation, schools and youth clubs are also locations where children and young people can be exploited.

Harmful Sexual Behaviour (Including sharing of nudes or semi-nude images/videos/sexual violence and harassment/domestic violence – see earlier section)

Sexually harmful behaviour from young people does not always occur with the intent to harm others. There may be many reasons why a young person engages in sexually harmful behaviour, and it may be just as distressing to the young person who instigates it as well as the young person it is intended towards. Sexually harmful behaviour may range from inappropriate sexual language, inappropriate role play, to sexually touching another or sexual assault / abuse. This also includes sexting when someone sends or receives a sexually explicit text, image, or video. This includes sending 'nude pics', 'rude pics' or 'nude selfies'. Pressuring someone into sending a nude picture may occur in any relationship and to anyone, whatever their age, gender, or sexual preference. However, once the image is taken and sent, the sender has lost control of the image and these images could end up anywhere. By having in their possession, or distributing, indecent images of a person under 18 on to someone else, young people are not even aware that they could be committing a criminal offence.

Gang Activity and Youth Violence

A child or young person can be exploited (sexually and / or physically) by a gang, but this is not necessarily the reason why gangs are formed. The Office of the Children's Commissioner has defined Child Exploitation in gangs and groups as:

- Gangs - mainly comprising men and boys aged 13-25 years old, who take part in many forms of criminal activity (e.g. knife crime or robbery) who can engage in violence against other gangs, and who have identifiable markers, for example a territory, a name, or sometimes clothing.
- Groups - involves people who come together in person or online for the purpose of setting up, co-ordinating and / or taking part in the sexual exploitation of children in either an organised or opportunistic way. Types of exploitation may include using sex as a weapon between rival gangs, as a form of punishment to fellow gang members gaining status within the hierarchy of the gang. Children and young people may be forced to gain entry into the gang by carrying out an initiation process which may be harmful to them and / or may inflict harm to others. Where abuse takes place in a gang environment, female members may perceive the abuse as normal, as well as accepting it as a way of achieving a respected status / title within the gang.

We raise awareness of child on child abuse in form time, assemblies and the curriculum. All incidents are investigated following our anti bullying policy and are recorded in CPOMS. The pastoral team are a constant source of support and the Sanctuary Space, Pastoral Hub and SEND base are available throughout the day for students to access support. Additionally, students have access to an online referral form where they can make an appointment with a pastoral member of staff.

10. The role of the form tutor

The role of the form tutor is particularly important in supporting the welfare of the child. Form tutors see their form groups every day of the school week. In this time tutors build relationships with tutees, their families and they also get a sense of tutees wider interests and aspirations. ~~Tutor time is at the beginning of the day. Tutors therefore are ideally placed to note how tutees present physically and practically for school, monitor attendance, and communicate to relevant pastoral and safeguarding teams where there are concerns.~~ Tutor time is in the middle of the day and allows tutors to monitor attendance, punctuality and communicate to relevant pastoral and safeguarding teams where there are concerns. Tutors and the attendance team will follow procedures set out in the attendance policy. Following 10 days of non-school attendance or when the School or Setting have completed all reasonable checks, the School or Setting must refer to the Education Welfare Service (EWS) using the Missing Child Referral form. The school recognises that repeated or prolonged absence from school can be an indicator of abuse, as laid out in [KSCIE 2023](#) paragraph 175 and responds to such patterns of absence accordingly. The Education Welfare Service will then make reasonable efforts to identify the child's current whereabouts/destination. This will include:

- undertaking a home visit within 5 working days of receipt of the referral, to make enquiries at home or with known contacts and neighbours, as appropriate
- reference to local databases within the Local Authority
- contact with any other agencies known to be involved with the family

11. Disclosure

All members of staff, volunteers and governors must know how to respond to a student who discloses abuse, and they must be familiar with procedures to be followed.

It takes a lot of courage for a child to disclose that they are being abused. They may feel disloyal, ashamed, particularly if the abuse is sexual, their abuser may have threatened what will happen if they tell, they may have lost all trust in adults, or they may believe, or have been told, that the abuse is their own fault.

If a student talks to you about any risks to their safety or wellbeing you will need to let them know that you must pass the information on – you are not allowed to keep secrets. The point at which you do this is a matter for professional judgement. If you jump in immediately, the student may think that you do not want to listen, if you leave it till the very end of the conversation, the student may feel that you have misled them into revealing more than they would have otherwise.

During your conversation with the student:

- Allow them to speak freely.
- Remain calm and do not overreact – the student may stop talking if they feel they are upsetting you.
- Give reassuring nods or words of comfort – ‘I’m so sorry this has happened’, ‘I want to help’, ‘This isn’t your fault’, ‘You are doing the right thing in talking to me’.
- Do not be afraid of silences – remember how hard this must be for the student.
- Under no circumstances ask investigative questions – such as how many times this has happened, whether it happens to siblings too, or what does the student’s mother think about all this. Use TED – Tell me about that, Explain that to me, Describe that...
- At an appropriate time, tell the student that in order to help them you must pass the information on.
- Respect the child’s personal space. Do not automatically offer any physical touch as comfort. It may be anything but comforting to a child who has been abused.
- Avoid admonishing the child for not disclosing earlier. Saying ‘I do wish you had told me about this when it started’ or ‘I can’t believe what I’m hearing’ may be your way of being supportive but the child may interpret it that they have done something wrong.
- Tell the student what will happen next.
- Report verbally to the Designated Safeguarding Lead.
- Write up your conversation as soon as possible and pass to the Safeguarding team for upload to CPOMS.
- Seek support if you feel distressed.
- If, at any point, there is a risk of immediate serious harm to a child, a referral should be made to children’s social care immediately. Anybody can make a referral.

12. Confidentiality

While it is recognised that all matters relating to safeguarding individual children are confidential, a member of staff, governor, or volunteer, if confided in by a student, must never guarantee confidentiality to that student.

Where there is a Child Protection concern it will be passed immediately to the Designated Safeguarding Lead who will consider the most appropriate response, consulting with relevant partners if appropriate.

The parents of the child should be informed immediately unless it is felt that this would not be in the best interests of the child.

The Headteacher or Designated or Deputy Designated Safeguarding Lead will disclose personal information about a student, including the level of involvement of other agencies, to other members of staff only on a 'need to know' basis.

All staff must be aware that they have a duty to share information with other agencies in order to safeguard children as set out in 'Working together to Safeguard Children, 2018' and 'Keeping Children Safe in Education, 2023'.

Practitioners must have due regard to the relevant data protection principles which allow them to share personal information, as provided for in the Data Protection Act 2018 and the General Data Protection Regulation (GDPR). To share information effectively all practitioners should be confident of the processing conditions under the Data Protection Act 2018 and the GDPR which allow them to store and share information for safeguarding purposes, including information, which is sensitive and personal, and should be treated as 'special category personal data'. Where practitioners need to share special category personal data, they should be aware that the Data Protection Act 2018 contains 'safeguarding of children and individuals at risk' as a processing condition that allows practitioners to share information. This includes allowing practitioners to share information without consent, if it is not possible to gain consent, it cannot be reasonably expected that a practitioner gains consent, or if to gain consent would place a child at risk.

For further guidance, staff, volunteers and governors should consult the Confidentiality policy.

13. Records and Monitoring

Child protection information will be stored and handled in line with the principles of the General Data Protection Regulation 2018:

- Processed lawfully, fairly and in a transparent manner in relation to the data subject.
- Collected for specified, explicit and legitimate purposes (in this case to meet statutory safeguarding requirements as set out in government legislation).
- Adequate, relevant, and limited to what is necessary in relation to the purposes for which they are processed.
- Accurate, and where necessary, kept up to date
- Kept in a form which permits identification of data subjects for no longer than is necessary for the purposes for which the personal data are processed (Child protection files should be passed on to any new school the child attends separately to the main student file and kept until they are 25 (this is 7 years after they reach the school leaving age) (IRMS, 2016).)
- Appropriate security measures are in place to protect the personal data held
- Take responsibility for what the school does with personal data and how the school complies with the other principles. Are able to demonstrate compliance through ensuring appropriate measures and records are in place.

Safeguarding records are normally exempt from the disclosure provisions of the General Data Protection Regulation 2018, which means that children and parents do not have an automatic right to see them. This must be done through a Subject Access Request (SAR). This information belongs to the child, who has a right

to deny their parent /carer's access to the file if they wish to do so – further information regarding SARs can be accessed here: *What about requests for information about children?* <https://ico.org.uk/for-organisations/guide-to-the-general-data-protection-regulation-gdpr/individual-rights/right-of-access/> . If any member of staff receives a request from a student or parent to see safeguarding/child protection records, they should refer the request to the Headteacher.

The General Data Protection Regulation 2018 does not prevent school staff from sharing information with relevant agencies, where that information may help to protect a child.

Any concerns about a child will be recorded in writing within 24 hours. All records must provide a factual, evidence-based account. Accurate recording of actions should be made. Records will be signed, dated and where appropriate witnessed.

Safeguarding actions and notes are recorded electronically in CPOMS. Authorisation to access these electronic records will be controlled by the Designated Safeguarding Lead.

Hard copies of records or reports relating to Safeguarding concerns will be kept in a separate, confidential file, securely stored away from the main student file. These are kept in the Main Office. Where this is the case, a note will be added to the student's CPOMS file to indicate the separate safeguarding file.

The school will keep written records of concerns about children, even where there is no need to action the matter immediately. These records will be kept within the separate, confidential file in CPOMS.

Records will be kept up to date and reviewed regularly. Original notes will be retained as evidence if there are criminal proceedings arising from current or historical allegations of abuse or neglect or civil actions.

Timely and accurate recording will take place when there are any issues regarding a child. A record of each episode/incident/concern/activity regarding that child, including telephone calls to other professionals, needs to be recorded in chronological order and kept within the confidential file for that child. Support and advice will be sought from Children's Social Care, the Local Authority Designated Officer (LADO) or other relevant agencies, whenever necessary and recorded.

If the child moves to another setting the Safeguarding file should be sent via CPOMS or by registered post immediately to the Designated Safeguarding Lead at the new setting, making sure that the Safeguarding file is transferred separately from the main student file. There must be liaison between the two Designated Safeguarding Leads to ensure a smooth and safe transition for the child.

Where the new school is not known, the Educational Welfare Service and student-tracking officer at Cheshire West and Chester should be informed so that the child can be included on the database for missing pupils and action taken to ascertain the safety and wellbeing of the child and that the child is receiving their right to education.

14. Supporting children

Some children may have an increased risk of harm. Many factors can contribute to an increase in risk, including prejudice and discrimination, isolation, social exclusion, communication issues and a reluctance on the part of some adults to accept that abuse can occur.

To ensure that all our students receive equal protection, we will give special consideration to children who are:

- (SEND) special educational needs and disabilities or physical health issues – staff must consider whether their behaviour, mood and injury may relate to possible abuse and not just their SEN or disability; be aware that they have a higher risk of peer group isolation; there is a possibility of a disproportionate impact of bullying; and they may have difficulties with communication
- Looked after children and previously looked after children
- *Living in a domestic abuse situation (now defined in law as victims)*
- affected by parental substance misuse
- asylum seekers
- living away from home
- vulnerable to being bullied, or engaging in bullying
- living in temporary accommodation
- live transient lifestyles
- living in chaotic and unsupportive home situations
- vulnerable to discrimination and maltreatment on the grounds of race, ethnicity, religion, sexuality, or gender identity disorder
- involved directly or indirectly in child sexual exploitation or child trafficking
- do not have English as a first language.
- who need a social worker (Child in Need and Child Protection Plans)
- missing from education
- requiring mental health support
- Care leavers
- with family members in prison

Special consideration includes the provision of safeguarding information and resources in community languages and accessible formats. We recognise that children who are abused or witness violence may find it difficult to develop a sense of self-worth. They may feel helplessness, humiliation, and some sense of blame. The school may be the only stable, secure, and predictable element in the lives of children at risk. When at school, their behaviour may be challenging and defiant or they may be withdrawn. The school will endeavour to support the student through:

- The content of the curriculum.
- A school ethos which promotes a positive, supportive and secure environment and gives students a sense of being valued.
- Implementation of the school Behaviour Policy that is aimed at supporting vulnerable students. The school will ensure that the student knows that some behaviour is unacceptable, but they are nonetheless valued and are not to be blamed for any abuse which has occurred.
- Liaison with other agencies that support the student, such as Children's Social Care, Youth Offending service and Education Psychology Service.
- Raising awareness to the school community of Operation Encompass and the school's involvement with Cheshire Police.
- Ensuring that, where a student subject to a child protection plan leaves, their information is transferred to the new school immediately and that the child's social worker is informed.

15. Early Intervention and Prevention within Safeguarding

All school staff need to be aware of their responsibility to raise any concerns they have about a child as early as possible in order to prevent the situation worsening. This may present as a change in a child's behaviour, appearance or from a conversation with the family about home conditions, financial difficulties, speech and language, toileting issues etc. Where this concern does not identify a safeguarding issue but could lead to more serious concerns if left, staff need to follow the procedures set out in the Team around the Family (TAF) guidance to fulfil their duties at level 2 and 3 on the Continuum of Need. This may involve signposting to or involving more appropriate agencies for support and may involve the school acting as lead person on a child's TAF. In the event of complex needs, a referral to integrated access and referral team (i-ART) should be made.

Young Carers

In many families, children contribute to family care and well-being as a part of normal family life. A young carer is a child who is responsible for caring on a regular basis for a relative (usually a parent, grandparent, sometimes a sibling or very occasionally a friend) who has an illness or disability. Many young carers may experience:

- Social isolation.
- A low level of school attendance.
- Some educational difficulties.
- Impaired development of their identity and potential.
- Low self-esteem.
- Emotional and physical neglect.
- Conflict between loyalty to their family and their wish to have their own needs met.

Where a young carer is identified, the child's needs will be considered using the Team around the Family process.

16. Recruitment

The school pays full regard to DfE guidance 'Keeping Children Safe in Education' 2023. We ensure that all appropriate measures are applied in relation to everyone who works in the school who is likely to be perceived by the children as a safe and trustworthy adult, including volunteers and staff employed by contractors. Safer recruitment practice includes scrutinising applicants, verifying identity, academic and vocational qualifications, obtaining professional references, checking previous employment history, and ensuring that a candidate has the health and physical capacity for the job. It also includes undertaking interviews and checking prohibition to teach, Disclosure and Barring checks and right to work in England checks.

In line with statutory changes, underpinned by regulations, the following will apply:

- An enhanced DBS Check is obtained for all new appointments where an individual will 'regularly' have contact with our students, which will include a barred list/prohibition from teaching check for all new teaching staff.
- this school is committed to keep an up-to-date single central record detailing a range of checks carried out on our staff. This is held on CPOMS and maintained by Ellis Doak, supported by Sara

Sowden.

- all new appointments to our school workforce who have lived outside the UK will be subject to additional checks as appropriate.
- our school ensures that supply staff have undergone the necessary checks and will be made aware of this policy.
- identity checks must be carried out on all appointments to our school workforce before the appointment is made, in partnership with the LA.
- All shortlisted candidates will have an online search of publicly available information carried out as part of the school's safer recruitment due diligence.

All staff who have met the appropriate checks are issued with a blue lanyard. Governors who have had appropriate checks are issued with a black lanyard. The Safer Recruitment procedures are set out in Appendix 9.

17. Volunteers

We understand that some people otherwise unsuitable for working with children may use volunteering to gain access to children; for this reason, any volunteers in the school, in whatever capacity, are expected to follow the policies and procedures in the same way *as* paid staff.

Where a parent or other volunteer helps on a one-off basis, he/she will only work under the direct supervision of a member of staff, and at no time have one to one contact with children. These volunteers can clearly be identified by a red lanyard and should not be left unaccompanied at any point whilst in school. However, if a parent or other volunteer is to be in school regularly or over a longer period then they will be checked to ensure their suitability to work with children.

We will ensure all volunteers receive guidance on the parameters of their role and what to do if they have concerns before they start their work with the school.

18. Safe Staff

Checks will be undertaken corresponding to Safer Recruitment procedures on all adults working in the school to establish their suitability to work with children.

All school staff will take care not to place themselves in a vulnerable position with a child. It is always advisable for interviews or work with individual children or parents to be conducted with or in view of other adults.

If an allegation is made against another member of staff, supply staff or volunteer, the member of staff receiving the allegation will immediately inform the Headteacher or the most senior teacher if the Headteacher is not present. The Headteacher or most senior teacher will then consult with the Local Authority Designated Officer (LADO).

Allegations against the Headteacher are reported to the Chair and referred to the Local Authority Designated Officer (LADO).

Anyone feeling unsure can seek confidential advice at any time from the Head of Safeguarding at CWAC council or Public Concern at Work, a registered charity which advises on serious malpractice in the workplace. For more information, visit their website or ring them on 020 7404 6609.

- The LADO contact details are: 0151 337 4570 – referral form <http://cheshirewestlscb.org.uk/policy-and-procedures/allegations-management-lado/>
- The Headteacher can be contacted via email on hcairns@bishopschester.co.uk
- The NSPCC <https://www.nspcc.org.uk/what-you-can-do/report-abuse/> is available as an alternative route for staff who do not feel able to raise concerns regarding child protection failures internally or have concerns about the way a concern is being dealt with. Staff can call 0800 028 0285.
- The Chair of Governors can be contacted on/via rmainard@bishopschester.co.uk or njohn@bishopschester.co.uk

19. Conduct of Staff

The school has a duty to ensure that professional behaviour applies to relationships between staff and children, and that all members of staff are clear about what constitutes appropriate behaviour and professional boundaries.

Staff will have access to Keeping Children Safe in Education 2023 on appointment/induction and have read Part 1 as a minimum. They also should follow the Staff and Volunteer Code of Conduct.

All staff should be aware of and give due regard to the dangers inherent in:

- Working alone with a child.
- Physical interventions.
- Cultural and gender stereotyping.
- Dealing with sensitive information.
- Giving to, and receiving gifts from, children and parents.
- Contacting children through private telephones (including texting), e-mail, MSN, or social networking websites. The same criteria apply to contact with former students. Contact using personal phone numbers, social networking is not permissible until a former student is aged 19 and has not attended Bishops' for more than 12 months. Until this time if contact is necessary this should be done via school email.
- Disclosing personal details inappropriately.
- Meeting students outside school hours or school duties.
- Making inappropriate sexual comments; excessive one to one attention beyond the normal requirements of the role; or inappropriate sharing of images

If any member of staff has reasonable suspicion that a child is suffering harm and fails to act in accordance with this policy and Cheshire West Safeguarding Children Board procedures, this will be viewed as misconduct, and appropriate action will be taken.

In addition, staff should understand that, under the Sexual Offences Act 2003, it is an offence for a person over the age of 18 to have a sexual relationship with a person under the age of 18, where that person is in a position of trust, even if the relationship is consensual. This means that any sexual activity between a member of the school staff and a student under 18 may be a criminal offence, even if that student is over the age of consent.

Allegations (also see separate whistleblowing policy)

Where an allegation is made against any person working in or on behalf of the school that he or she has:

- a) behaved in a way that has harmed, or may have harmed, a child.
- b) possibly committed a criminal offence against or related to a child.
- c) behaved towards a child or children in a way that indicates he or she would pose a risk of harm if they work regularly or closely with children.
- d) behaved or may have behaved in a way that indicates they may not be suitable to work with children

We will apply the same principles as in the rest of this document and will always follow the Cheshire West Safeguarding Children Procedures. Detailed records will be made to include decisions, actions taken, and reasons for these. All records will be retained securely.

Whilst we acknowledge such allegations, (as all others), may be false, malicious, or misplaced, we also acknowledge they may be with foundation. It is, therefore, essential that all allegations are investigated properly and in line with agreed procedures.

Initial action to be taken:

- The person who has received an allegation or witnessed an event will immediately inform the Headteacher and make a record.
- In the event that an allegation is made against the Headteacher the matter will be reported to the Chair of Governors who will proceed as the 'Headteacher'.
- The Headteacher will take steps, where necessary, to secure the immediate safety of children and any urgent medical needs.
- The member of staff will not be approached at this stage unless it is necessary to address the immediate safety of children.
- The Headteacher may need to clarify any information regarding the allegation, however no person will be interviewed at this stage.
- The Headteacher will consult with the Local Authority Designated Officer to determine if it is appropriate for the allegation to be dealt with by school or if there needs to be a referral to i-ART and/or the police for investigation.
- Consideration will be given throughout to the support and information needs of students, parents, and staff.
- The Headteacher will inform the Chair of Governors of any allegation.
- If consideration needs to be given to the individuals' employment, advice will be sought from HR.
- Low level concerns reported to the Head teacher should be shared with the DSL if the concern is deemed not to meet the threshold of harm. The DSL and Headteacher will investigate these concerns following the Low-Level Concerns Guidance.

20. Supporting Staff

We recognise that staff working in the school who have become involved with a child who has suffered harm, or who appears likely to suffer harm, may find this situation stressful and upsetting.

We will support such staff by providing an opportunity to talk through anxieties with the Designated Safeguarding Lead or Headteacher and to seek further support, if necessary.

The Designated and Deputy Designated Safeguarding Leads and the Headteacher can seek personal support through SCiE Team 0151 356 6843/ scie@cheshirewestandchester.gov.uk.

Guidance for Safer Working Practice for Adults who work with Children and Young People in Education Settings <https://www.saferrecruitmentconsortium.org/GSWP%20Oct%202015.pdf> This guidance provides advice on the boundaries of appropriate behaviour and the circumstances that should be avoided in order to limit complaints against staff of the abuse of trust and/or allegations of abuse.

21. Photographing Children

The vast majority of people who take or view photographs or videos of children do so for entirely innocent, understandable and acceptable reasons. We acknowledge, however, that some people abuse children through taking, using, or circulating images.

Staff and Volunteers

- Photographs and videos will only be stored using school equipment – using personal mobile phones for this purpose is prohibited.
- Consent will be sought from parents/carers via an annual Data Collection Sheet in relation to images, videos, or other recordings of students. With their agreement, these may be used within or by the school e.g., to publish on the website or in relation to curriculum work or extended activities.
- If a student poses for a photograph in school, it will be understood that this may be used for promotional materials (e.g., social media, displays). Students are encouraged to be aware of consent and appropriate use of their own image through ICT lessons.
- To protect those students where consent is not given, staff will remind students before images or recordings are captured that only those whose parents agree to this may feature.
- The wishes of the student will also be taken into account when taking images or videos, ensuring that those who do not wish to have their photograph taken or be filmed are respected.
- All photographs and videos involving students, or the school will be available for scrutiny, and staff will be prepared to justify the images or footage taken.
- Careful consideration will always be given to the activities which are being filmed or photographed, to ensure that images or videos are not indecent, cannot be misused and do not bring the school into disrepute.
- Students are encouraged to tell us if they are worried or unsure about any photographs that are taken of them.
- The use of cameras on personal mobile devices is forbidden although where a member of staff has children and / or family friends who are members of the student body who may be photographed in other contexts, names and the relationship should be recorded on the school office database and

updated regularly. Where relevant, this information on the database should indicate the parent or carer of the school student has knowledge and agreement.

Parents or Members of the Public

We understand that parents like to take photos of, or video record their children in the school production, or at sports day, or school presentations. This is a normal part of family life, and we will not discourage parents from celebrating their child's successes. However, if there are Health and Safety issues associated with this (e.g., the use of a flash when taking photos could distract or dazzle the child, causing an accident), we will encourage parents to use film or settings on their camera that do not require flash.

If a student takes part in a public event, it will be understood that photographs may be taken by members of the public.

22. Before and After School Activities and Contracted Services

Where the Governing Body transfers control or otherwise allows the use of school premises to external bodies (such as sports clubs) or service providers during or out of school hours, we will ensure that these bodies or providers have appropriate safeguarding policies and procedures, and that there are arrangements in place to co-ordinate with the school on such matters meeting the guidance as laid out in paragraph 167 [KSCIE 2023](#) and in [Keeping Children Safe in Out of School Settings](#). Such considerations will be made explicit in any contract or service level agreement with the bodies or providers.

If the school receives an allegation related to an incident that happened when an individual or organisation was using the school premises for the purposes of running activities for children, the school will follow our safeguarding policies and procedures, informing the LADO.

23. Complaints and Compliments

Our complaints procedure will be followed where a student or parent raises a concern about poor practice towards a student that initially does not reach the threshold for child protection action. Poor practice examples include unfairly singling out a student, using sarcasm or humiliation as a form of control, bullying, or belittling a student or discriminating against them in some way. Complaints are managed by senior staff e.g. the Headteacher and Governors. A copy of the school complaints policy can be found on the school website. Complaints from staff are dealt with under the school's Complaints, Disciplinary and Grievance procedures.

24. Additional information for parents

Contact arrangements and Parental responsibility

We recognise that a relationship breakdown can be very distressing for all involved, however, any contact arrangements must be agreed outside of school and school should not be put in a position where they are placed in the middle of contact disputes. We aim to make the school environment a calm and safe place for your children, as well as the whole school community, and would be unable to do this if we are placed at the centre of disputes. School is also unable to prevent anyone with parental responsibility (PR) from picking up a

child from school unless there is a court order in place stating that the person with PR is not allowed to do so, although the school will attempt to seek permission from the primary carer before releasing the child.

25. Links to other School policies

This Policy will be read in conjunction with other policies regarding the safety and welfare of children. These together make up the suite of policies to safeguard and promote the welfare of children in this school. These policies are available on the Staff Dashboard:

- Dignity and respect policy
- Equal Opportunities Policy
- ICT Acceptable Use Policy
- Whistleblowing Policy
- E-Safety Policy
- Medical Conditions Policy
- Health and Safety Policy
- Attendance Policy
- Behaviour for Learning Policy (BESt)
- Staff code of Conduct Policy
- Low level concerns guidance
- Drug and Substance Misuse Policy
- Relationships and Sex Education Policy
- Security policy
- Cheshire West Safeguarding Children Board Safeguarding procedures
- Data Protection Policy
- Confidentiality Polciy
- COVID safeguarding updates

26. Appendices

Appendix 1 - Safeguarding Summary Booklet

Safeguarding Children – Key Points

All adults in charge of or in contact with children or young people should know what to do if they suspect that someone is being physically, emotionally, or sexually abused or neglected, or if someone tells them that this is happening. Ensure that you are familiar with the Safeguarding policy; copies of which are located in Frog under staff documents. On request, you will be provided with a printed copy.

Safeguarding and promoting the welfare of children is defined as:

- protecting children from maltreatment
- preventing impairment of children's mental and physical health or development;
- ensuring children are growing up in circumstances consistent with the provision of safe and effective care
- taking action to enable all children to have the best outcomes

Child Protection is a part of Safeguarding and promoting welfare. It refers to the activity that is undertaken to protect specific children who are suffering, or are likely to suffer, significant harm.

Effective child protection is essential as part of wider work to safeguard and promote the welfare of children. However, all agencies and individuals should aim to proactively safeguard and promote the welfare of children so that the need for action to protect children from harm is reduced.

Frequency of abuse

- 1 or 2 children die each week as a result of abuse or neglect
- Around 1 in 5 children (20%) suffer abuse
- Around 50% of children who suffer abuse will not tell anyone at the time it is happening
- Disabled children are 3 times more likely to be abused
- Around 1 in 5 children have seen content online that they found worrying, nasty or offensive
- Most child abuse is preventable

Who might abuse?

- Family member: parent, relative
- Family friend or neighbour
- Trusted adult- a person or persons who the child knows well; sports coaches, medical professionals, youth/social workers, religious leaders
- Institutions and other organised groups
- Numbers of adults can work together to plan the sexual abuse of children. They may join communities, professional occupations, or organised activities where they may gain easy access to children
- A child or group of children

Categories of Abuse

There are four categories of abuse

- Physical
- Emotional
- Sexual
- Neglect

Designated Safeguarding Team

The current Designated Safeguarding Lead is Adrian Carr - Deputy Headteacher. He is supervised by Chris Woods - Safeguarding Governor.

Two Deputy Designated Safeguarding Lead have been appointed and will provide additional support to ensure the responsibilities for safeguarding children are fully embedded within the school ethos and that specific duties are discharged. This will entail supporting the Designated Safeguarding Lead in dealing with referrals, attending case conferences, and supporting the child/children. They have received appropriate training and are supported in their role. The current Deputy Designated Leads are Andy Owen – Assistant Headteacher Head of Sixth Form and Liz Evans and Jo Evans (jobs hare) - Pastoral Support Managers and Both Deputy Designated Leads are supervised by Adrian Carr.

The Designated Safeguarding Lead and the Deputy Designated Safeguarding Leads are responsible for the following:

Referrals

- Referring cases of suspected abuse or allegations to the relevant investigating agencies.
- The Designated Safeguarding Lead is not responsible for dealing with allegations made against members of staff. This is the responsibility of the Headteacher who will inform the Local Authority Designated Officer (LADO).

The LADO contact details are: 0151 337 4570

LINK TO REFERRAL FORM <http://cheshirewestlscb.org.uk/policy-and-procedures/allegations-management-lado>

- Acting as a source of support, advice and expertise within the school when deciding on the most appropriate course of action by liaising with relevant agencies.
- Liaising with the Headteacher inform him of any issues and ongoing investigations. The Designated Safeguarding Lead will ensure there is always cover for this role on the school site in the event of their absence.
- Ensuring that a systematic means of monitoring children known or thought to be at risk of harm, is in place and that the school contributes to assessments of need and actively supports multi agency planning for those children.

Following any information raising concern, the Designated Safeguarding Lead will consider:

- any urgent medical needs of the child
- the immediate safety and wellbeing of the child

- discussing the matter with other agencies currently known to be involved with the child and family
- the child 's wishes and feelings

Then decide:

- wherever possible, to talk to parents, unless to do so may place a child at risk of significant harm, impede any police investigation and/or place the member of staff or others at risk
- whether to make a child protection referral to Integrated Access Referral Team (I-ART) because a child is suffering or is likely to suffer significant harm and if this needs to be undertaken immediately

OR

- not to make a referral at this stage
- if further monitoring is necessary
- if it would be appropriate to invite the parent or carer to engage with a Team Around the Family assessment and/or make a referral for other services.

All information and actions taken, including the reasons for any decisions made, will be fully documented on the child's safeguarding file.

Dos and Don'ts

In addition, the following key points give a guide on what to do and not to do.

1. **Always** stop and listen straight away to someone who wants to tell you about incidents or suspicions of abuse.
2. Make a note of what was said or observed as soon as possible and pass to the Designated Safeguarding Lead or a Deputy Designated Safeguarding Lead at your earliest opportunity.
3. Never make a promise that you will keep what is said confidential or secret. If you are told about abuse you have a responsibility to tell the right people to get something done about it. You should explain that if you are going to be told something very important that needs to be sorted out, you will need to tell the people who can sort it out, but that you will only tell the people who absolutely have to know.
4. Do not ask leading questions that might give your own ideas of what might have happened, e.g., "did he do X to you?" Just ask, "what do you want to tell me?" or "Is there anything else you want to say?"
5. Immediately tell the Designated Safeguarding Lead unless they are the subject of the accusation. Don't tell other adults or young people what you have been told. If someone has made an accusation to you or you have concerns about the Head Teacher, you should report your concerns to the Chair of Governors David Walsh.
6. Discuss with the Designated Safeguarding Lead whether any steps need to be taken to protect the person who has told you about the abuse.
7. **Never** attempt to carry out an investigation of suspected or alleged abuse by interviewing people etc. Children's Social Care and police officers are the people who have the authority to do this. You could cause more damage and endanger possible criminal proceedings. **It is your duty to refer concerns on, not investigate.**
8. As soon as possible (and certainly the same day) the Designated Safeguarding Lead should refer the matter to the Integrated Access and referral team (I-ART) if a child is at risk of or suffering or likely to suffer significant harm. Follow their instructions about what to do next. They will set up any necessary investigations. That is their statutory job. In the case of an allegation against an adult that works with

children, the Headteacher, or the Chair of Governors where the allegation is against the Head Teacher, should refer the matter to The Local Authority Designated Officer (LADO).

9. **Never** think abuse is impossible in your organisation or assume that an accusation against someone you know well, and trust is bound to be wrong.
10. Children and young people often tell other young people, rather than staff or other adults about abuse. Therefore, you may hear an allegation from another child. This should be acted upon in exactly the same manner as outlined above.

When listening to a disclosure DO

- Stay calm
- Be aware of your body language - nod and make reassuring noises and show the child you care through your facial and body language
- Listen to the child without interrupting - pay particular attention to the child's words
- Give the child time, don't hurry them
- Explain that you want to help, and you must tell someone else who will know what to do
- Offer reassurance - tell the child they have done the right thing by telling you
- Give the child other sources of confidential help e.g. Childline
- Inform a member of the Safeguarding Team as soon as possible

When listening to a disclosure DO NOT

- Ask leading questions, put words into the child's mouth or press for details
- Rush the child
- Examine the child
- Investigate
- Promise confidentiality
- Summarise or use your own words to describe events
- Delay sharing the information with a member of the Safeguarding Team

Assessment Triangle

Schools are able to build an accurate picture of a child's life from the pieces of information that staff can provide. When considering whether to make a referral to other services (if it is not a one-off significant event) the Safeguarding Team will look at all the information and think about the:

- Degree and extent of harm
- Duration and frequency of abuse or neglect

The assessment framework triangle is used to help identify needs of the child and therefore the services that they require.

Assessment Framework Triangle



What needs to be recorded?

- The time and date the disclosure was made, or the issue / concern arose
- The time and date the record is being made
- An accurate record of what has been said, using the child's words – CAPITAL LETTERS
- An accurate record of what has been seen – use body charts where appropriate
- Whether the information is 1st hand, 2nd hand, fact, or opinion
- Clear and unambiguous notes
- A record of any decision making / actions
- Your name and a legible signature

Protecting yourself

- Through day-to-day contact with children, staff in schools are in a good position to observe the outward signs of abuse...
- Unfortunately, due to their close personal relationships with children they are also vulnerable to allegations of abuse or misconduct
- These allegations may be false, malicious, or unsubstantiated but in some circumstances, they are true
- Allegations can be made as a result of inexperience, a genuine mistake, stress OR a deliberate harmful or abusive act

Whistleblowing

- Unacceptable behaviour must be reported to ensure the safety of pupils
- The Whistleblowing Policy supports staff who raise concerns in good faith and not out of malice, and ensure they will be taken seriously
- Any concerns about a colleague or other professionals' behaviour must be reported to help create a safe, open and transparent environment in school

Don't think "What if I'm wrong?" - think "What if I'm right?"

What happens if an allegation is made against an adult?

Head teacher considers:

- What information do I have about the subject of the allegation?
- What information do I have about the parties involved?
- Am I aware of any incident/tension/friction between the parties?
- Could the incident have taken place?

Head teacher must then consider:

- Does the allegation suggest that the individual has?
- behaved in a way that has harmed, or may have harmed, a child
- possibly committed a criminal offence against, or related to, a child; or
- behaved towards a child or children in a way that indicates s/he would pose a risk of harm
- If yes, contact must be made
- with LADO within 24 Hours

When might you be vulnerable?

- When you are alone with a child
- When you are administering first aid
- When a child seeks affection
- If you are restraining a child
- If you are providing intimate personal care
- If there is a lack of training or support (at induction and ongoing)
- If you are unclear about procedures
- If you fail to report or seek advice / poor lines of communication
- If you fail to record
- Due to the culture and ethos of the school

Safe Practice is when;

- Your behaviour is open and transparent
- You adopt high standards of personal conduct
- Your behaviour in and out of school does not compromise your position within the school
- You know and understand the school's policies and procedures and therefore work within them
- You never give an individual student a gift that is not part of the school's "Rewards Policy"
- You never give your personal mobile number or personal e-mail address to a student
- You are aware of the dangers of social media e.g. Facebook, Twitter, etc.

Key contacts - Essential contacts Contact Details

Designated Safeguarding Lead Deputy Designated Safeguarding Leads	Adrian Carr Andy Owen Liz Evans / Jo Evans
Headteacher	Helen Cairns
Nominated Governor for Safeguarding	Chris Woods
Chair of Governors	Ralph Mainard/ Nigel John (co-chairs)
Local Authority Designated Officer	Paul Jenkins - https://www.cheshirewestlscb.org.uk/policy-and-procedures/allegations-management-lado/
Safeguarding Children in Education Service Manager	Susie Sheasby (Chester and Rural Locality) Mob: 07554773926 - susie.sheasby@cheshirewestandchester.gov.uk
Safeguarding Children in Education Manager (SCiE)	Kerry Gray (Manager) Mob: 07789484743 kerry.gray@cheshirewestandchester.gov.uk
Integrated access and Referral Team 8.30-5pm Mon-Thurs 8.30-4.30 Fri Flintshire access and Referral Team	0300 123 7047 01352 701167
Emergency Duty Team (Out of hours) 4.30pm-8am Mon-Thurs From 4pm Friday 24 hours weekends and bank holidays	01244 977 277
TAF Area Co-ordinator	Hayley Bennett 0151 3376472
Safeguarding Children Partnership	www.cheshirewestscp.org.uk 0151 356 6494
School Health Advisor	Laura Ates
CAMHS	01244 393200
Cheshire Police Youth Engagement Officer – Chester LPU Cheshire Constabulary	0845 458 0000 or 101 for non-emergencies 999 in case of emergency Police Constable 5090 Rhiannon Dafydd Telephone: 01606 363092 Rhiannon.Dafydd@cheshire.pnn.police.uk
Safer Schools Officer	Sergeant 5239 Andrew Cooper Andrew.Cooper@cheshire.police.uk
Youth Engagement Officer	PC 3984 Helen Roberts – Youth Engagement Officer for Chester

Appendix 2 - Indicators of Vulnerability to Radicalisation

1. Radicalisation refers to the process by which a Lead comes to support terrorism and forms of extremism leading to terrorism.
2. Extremism is defined by the Government in the Prevent Strategy as:
Vocal or active opposition to fundamental British values, including democracy, the rule of law, individual liberty and mutual respect and tolerance of different faiths and beliefs. We also include in our definition of extremism calls for the death of members of our armed forces, whether in this country or overseas.
3. Extremism is defined by the Crown Prosecution Service as:
The demonstration of unacceptable behaviour by using any means or medium to express views which:
 - Encourage, justify or glorify terrorist violence in furtherance of particular beliefs.
 - Seek to provoke others to terrorist acts.
 - Encourage other serious criminal activity or seek to provoke others to serious criminal acts; or
 - Foster hatred which might lead to inter-community violence in the UK.
4. There is no such thing as a “typical extremist”: those who become involved in extremist actions come from a range of backgrounds and experiences, and most individuals, even those who hold radical views, do not become involved in violent extremist activity.
5. Students may become susceptible to radicalisation through a range of social and environmental factors - it is known that violent extremists exploit vulnerabilities in individuals to drive a wedge between them and their families and communities. It is vital that school staff are able to recognise those vulnerabilities.
6. Indicators of vulnerability include:
 - Identity Crisis – the student / student is distanced from their cultural / religious heritage and experiences discomfort about their place in society.
 - Personal Crisis – the student / student may be experiencing family tensions; a sense of isolation; and low self-esteem; they may have dissociated from their existing friendship group and become involved with a new and different group of friends; they may be searching for answers to questions about identity, faith and belonging.
 - Personal Circumstances – migration; local community tensions; and events affecting the student / student’s country or region of origin may contribute to a sense of grievance that is triggered by personal experience of racism or discrimination or aspects of Government policy.
 - Unmet Aspirations – the student / student may have perceptions of injustice; a feeling of failure; rejection of civic life.
 - Experiences of Criminality – which may include involvement with criminal groups, imprisonment, and poor resettlement / reintegration.

- Special Educational Need – students / students may experience difficulties with social interaction, empathy with others, understanding the consequences of their actions and awareness of the motivations of others.
7. However, this list is not exhaustive, nor does it mean that all young people experiencing the above are at risk of radicalisation for the purposes of violent extremism.
8. More critical risk factors could include:
- Being in contact with extremist recruiters.
 - Accessing violent extremist websites, especially those with a social networking element.
 - Possessing or accessing violent extremist literature.
 - Using extremist narratives and a global ideology to explain personal disadvantage.
 - Justifying the use of violence to solve societal issues.
 - Joining or seeking to join extremist organisations; and
 - Significant changes to appearance and / or behaviour.
 - Experiencing a high level of social isolation resulting in issues of identity crisis and / or personal crisis.

PREVENTING VIOLENT EXTREMISM

The SPOC is Adrian Carr Deputy Headteacher.

The roles and responsibilities of the SPOC include.

- Ensuring that staff of the school are aware that you are the SPOC in relation to protecting students/pupils from radicalisation and involvement in terrorism.
- Maintaining and applying a good understanding of the relevant guidance in relation to preventing students/pupils from becoming involved in terrorism and protecting them from radicalisation by those who support terrorism or forms of extremism which led to terrorism.
- Raising awareness about the role and responsibilities of all staff in relation to protecting students/pupils from radicalisation and involvement in terrorism.
- Monitoring the effect in practice of the school's RE curriculum and assembly policy to ensure that they are used to promote community cohesion and tolerance of different faiths and beliefs.
- Raising awareness within the school about the safeguarding processes relating to protecting students/pupils from radicalisation and involvement in terrorism.
- Acting as the first point of contact within the school for case discussions relating to students / pupils who may be at risk of radicalisation or involved in terrorism.
- Collating relevant information from in relation to referrals of vulnerable students / pupils into the Channel* process.
- Attending Channel* meetings as necessary and carrying out any actions as agreed.
- Reporting progress on actions to the Channel* Co-ordinator and sharing any relevant additional information in a timely manner.
- Channel is a multi-agency approach to provide support to individuals who are at risk of being drawn into terrorist related activity. It is led by the West Midlands Police Counter-Terrorism Unit, and it aims to
 - Establish an effective multi-agency referral and intervention process to identify vulnerable individuals.

- Safeguard individuals who might be vulnerable to being radicalised, so that they are not at risk of being drawn into terrorist-related activity; and
- Provide early intervention to protect and divert people away from the risks they face and reduce vulnerability.

Appendix 3 – Essential Contacts

Essential Contacts - Contact Details

Designated Safeguarding Lead Deputy Designated Safeguarding Leads	Adrian Carr Andy Owen Liz Evans /Jo Evans
Headteacher	Helen Cairns
Nominated Governor for Safeguarding	Chris Woods
Chair of Governors	Ralph Mainard/ Nigel John (co-chairs)
Local Authority Designated Officer	<i>Paul Jenkins -</i> https://www.cheshirewestlscb.org.uk/policy-and-procedures/allegations-management-lado/
Safeguarding Children in Education Service Manager	Susie Sheasby (Chester and Rural Locality) Mob: 07554773926 - susie.sheasby@cheshirewestandchester.gov.uk
Safeguarding Children in Education Manager (SCiE)	Kerry Gray (Manager) Mob: 07789484743 kerry.gray@cheshirewestandchester.gov.uk
Integrated access and Referral Team 8.30-5pm Mon-Thurs 8.30-4.30 Fri Flintshire access and Referral Team	0300 123 7047 01352 701167
Emergency Duty Team (Out of hours) 4.30pm-8am Mon-Thurs From 4pm Friday 24hours weekends and bank holidays	01244 977 277
TAF Area Co-ordinator	Hayley Bennett 0151 3376472
Safeguarding Children Partnership	www.cheshirewestscp.org.uk 0151 356 6494
School Health Advisor	Laura Ates
CAMHS	01244 393200
Cheshire Police Youth Engagement Officer – Chester LPU Cheshire Constabulary	0845 458 0000 or 101 for non emergencies 999 in case of emergency Police Constable 5090 Rhiannon Dafydd Telephone: 01606 363092 Rhiannon.Dafydd@cheshire.pnn.police.uk
Safer Schools Officer	Sergeant 5239 Andrew Cooper Andrew.Cooper@cheshire.police.uk
Youth Engagement Officer	PC 3984 Helen Roberts – Youth Engagement Officer for Chester

	Mobile - 07717 328509 Email - helen.roberts@cheshire.pnn.police.uk
--	--

Appendix 4 - The Safe Transfer of Child Protection/Safeguarding Files

When a child transfers to another school, the Designated Safeguarding Lead informs the receiving school within five school days, that a child protection/ safeguarding file exists. The receiving school should routinely ask if a child protection/safeguarding file exists, for all transfers. Bishops' Blue Coat High School routinely request information from schools where there are transfers at transition and in-year transfers.

The child protection/ safeguarding file will be passed on either by electronic transfer via CPOMS or by hand or sent recorded delivery, separate from the child's main school file, within five school days from notification. Care is taken to ensure that confidentiality is maintained, and the transfer process is as safe as possible. Parents are never used as couriers for such files.

We keep a copy of the file; this will provide us with evidence of what the school knew and the actions we took to safeguard and promote the welfare of the child. All copies are stored securely and destroyed once the retention period has expired. The minimum retention period is the lesser of either (a) six years, or (b) if relating to a child, the 25th birthday of the child, in line with the Limitation Act 1980.

Storage

All child protection/safeguarding records are sensitive and confidential and will be stored securely in accordance with the Trust's Data Protection Policy and Privacy Notices. The Trust will comply with its obligations under the General Data Protection Regulation 2018.

Access to Child Protection/ Safeguarding Files and Information Sharing

Any child who has a child protection/ safeguarding file has the right to access their personal record, unless to do so would affect their health and well-being of that or another person or would be likely to prejudice an on-going criminal investigation.

Parents (i.e., those with parental responsibility in law) are entitled to see their child's child protection /safeguarding file, on behalf of their child, with the same exceptions applying as to the child's right to access.

Requests for personal information can be made in accordance with the Trust's Data Protection Policy.

Appendix 5 – LADO Allegation Against an Adult – Referral Form



ALLEGATIONS AGAINST AN ADULT WHO WORKS WITH CHILDREN

STRICTLY CONFIDENTIAL

THE CONTENTS OF THIS REPORT ARE NOT TO BE REPRODUCED, COPIED OR DIVULGED IN ANY WAY. INFORMATION IS NOT TO BE DISCUSSED WITH, OR REVEALED TO, PERSONS WHO ARE NOT REQUIRED IN THE INTERESTS OF A CHILD TO HAVE SUCH INFORMATION. ALL ENQUIRIES FOR THE USE OF ANY SUCH INFORMATION SHOULD BE MADE TO THE LOCAL AUTHORITY DESIGNATED OFFICER

REFERRAL FORM

Once completed please email directly to the Children's Safeguarding Unit within 24 hrs of the allegation being made.

E-mail: Internal: Safeguarding LADO (West) Internal or

External: safeguardinglado@cheshirewestandchester.gov.uk

1. ADULT AGAINST WHOM THE ALLEGATION HAS BEEN MADE

NAME				
D.O.B				
ADDRESS				
JOB TITLE				
EMPLOYER				
EMPLOYER ADDRESS & CONTACT DETAILS				
	TEL:		EMAIL:	

2. REFERRER

NAME		
JOB TITLE		
ORGANISATION		
CONTACT DETAILS	TEL:	
	EMAIL:	
DATE OF REFERRAL		

3. CHILD'S DETAILS

NAME		
D.O.B		
ADDRESS		
IS THE CHILD KNOWN TO CHILDREN'S SOCIAL CARE?	Yes/No	Liquid Logic Number if known
IS THE CHILD IN THE CARE OF THE LOCAL AUTHORITY?	Yes/No	

***If there is more than one child directly involved, please copy and paste the above so that all relevant children are identified.

4. NATURE AND DETAILS OF ALLEGATION

PLEASE PROVIDE DETAILED INFORMATION ABOUT THE ALLEGATION AND ANY ACTIONS YOU HAVE ALREADY TAKEN. (Please do not refer to individuals by their initials)

OUTCOMES

For use by the Safeguarding and Quality Assurance Unit only

5. DISCUSSIONS AND ACTIONS

BRIEF RECORD OF DISCUSSION AND ACTIONS

6. DECISION

DOES THIS MATTER MEET THE CRITERIA FOR INVESTIGATION UNDER LADO PROCEDURES	YES/NO
PLEASE CLEARLY RECORD FINAL OUTCOME AND RATIONALE	

LADO OR THEIR REPRESENTATIVE WHO HAD OVERVIEW OF THE ALLEGATION		DATE:	
---	--	-------	--

Appendix 6 - Sexual Violence and Sexual Harassment Flow-chart

*Sources – Sexual violence and Sexual Harassment Between Children in Schools and Colleges (DFE, 2021)

*Limelight Sexual Misconduct Liaison Officer training materials

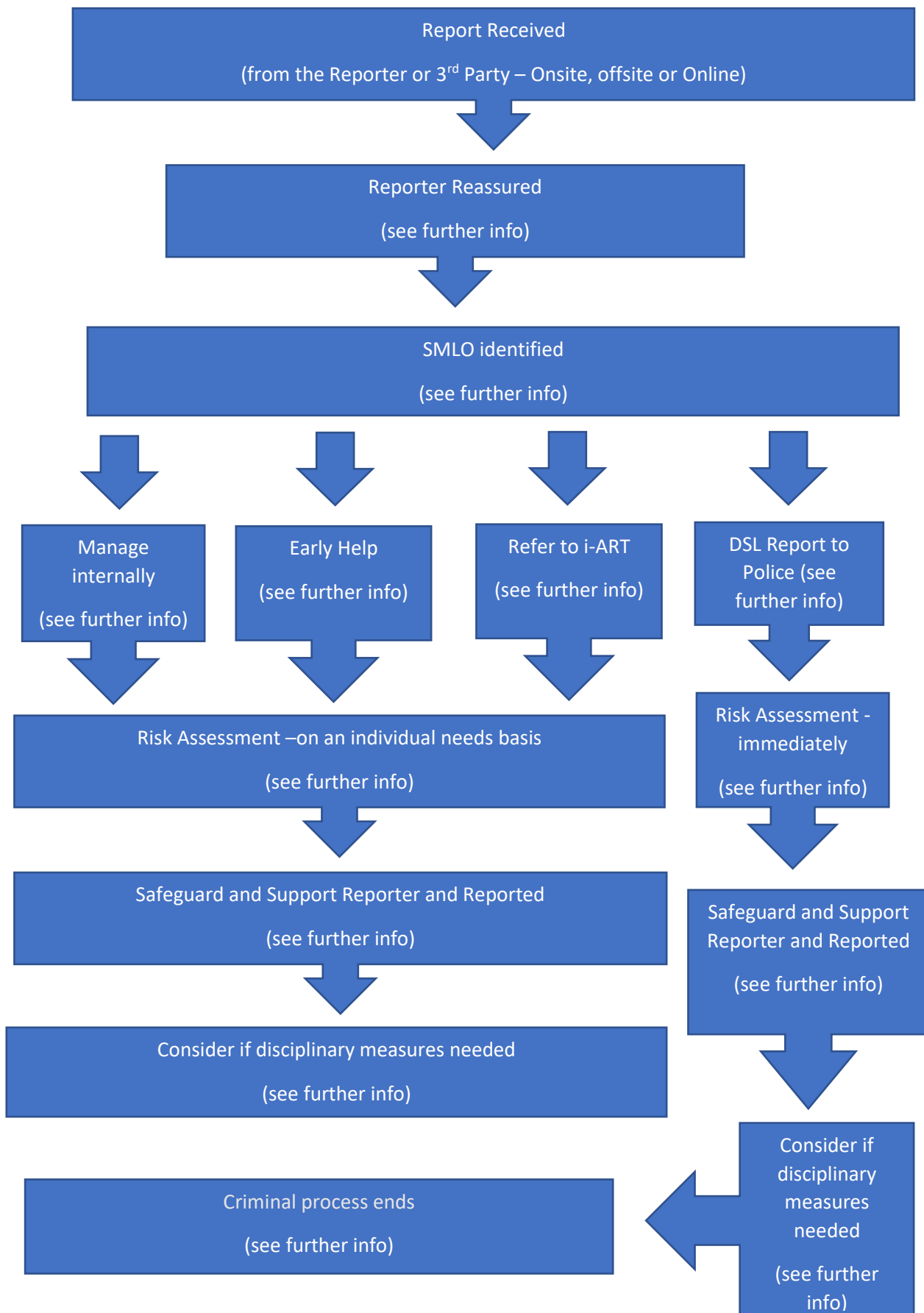
At the Bishops' High School, we follow the Sexual Misconduct Liaison Officer (SMLO) model when dealing with reports of sexual violence or sexual misconduct.

The model is based around both supporting the reporter and the reported with different members of trained staff to ensure that they receive the individual support required from the time of disclosure to such a point when support is no longer felt needed.

This model sits firmly within our Safeguarding processes and all procedures around disclosure and sharing of information are followed in line with policy and law, Children's Act 2004 Section 11.

Sexual Violence and Sexual Harassment Flow-chart





Further information

Reporter reassured.

- Taken seriously and kept safe, never be given an impression they are creating a problem
- Confidentiality not promised
- Listen to reporter non-judgementally
- Record the disclosure (facts as reported) following a “containing conversation” model
- Report to the DSL as soon as possible
- Reporter sensitively informed about referral to other agencies
- If reporter does not give consent to share, staff may still lawfully share in order to protect child from harm and to promote the welfare of children (see Sexual Violence and Sexual Harassment, paragraph 62)
- Parents of reporter informed, unless this would put reporter at greater risk.
- Ensure they have an SMLO to provide support.

If the reporter is over 18, discuss how they want to be supported and by whom, whether they want you to support to share with their parents, whether they want to report a crime and provide them with support agency contacts (e.g. RASASC, SARC) which you can support them to contact. Again, information can still lawfully be shared in order to protect child from harm and to promote the welfare of children (see Sexual Violence and Sexual Harassment, paragraph 62)

Anonymity – Note that in cases of sexual violence there is a legal protection of the reporter’s identity. Remember that this also includes sharing on social media and discussion amongst pupils in school.

Supporting the reported

- Inform parents of reported – advise of any referrals that need to be made
- If appropriate, ask reported about the incident
- Remove reported from any shared lessons with reporter (this is a neutral act, not an assumption of guilt).
- Ensure they have an SMLO to provide support.

Considerations

(Sexual Violence, Sexual Harassment and Harmful Sexual Behaviours)

Immediately: consider how to support the reporter and the reported with each SMLO working independently, liaising with the DSL/ DDSL as “case manager”.

- Wishes of the reporter and parents/carers
- Nature of the alleged incident
- Are external support services required e.g. SARC, RASAC
- Ages of the children
- Development stage of the children
- Any power imbalance
- One off, or part of a pattern of behaviour

- Any on-going risks to reporter, reported and others
- Other related issues and wider context (e.g. Exploitation, contextual safeguarding)

Manage internally

One-off incidents which the school/college believes that the young people are not in need of early help or statutory intervention, which would be appropriate for the setting to manage internally under the BEST (behaviour) and/or Dignity & Respect (anti-bullying) policy.

Early Help

Non-violent harmful sexual behaviours (see Harmful Sexual Behaviours Framework, (NSPCC)) or refer to Brook Traffic Light Tool if trained. Also consider if a TAF is needed to identify unmet needs and support the young people involved.

Refer to i-ART

All incidents where a child or young person has been harmed, is at risk of harm or is in immediate danger. Children's social care will support with next steps.

NB - Where a victim is 18 or over, consideration needs to be given as to whether they would be considered a vulnerable adult and therefore a referral to Adult services would be appropriate.

Report to Police

All incidents of rape, assault by penetration or sexual assault (including if alleged perpetrator is 10 or under). Discuss next steps with police, for example: disclosing information to other staff, informing alleged perpetrator and their parents.

Risk assessment

1. **Immediately** (when reported to police) – Do not wait for the outcome of the report to police before protecting reporter. Emphasis should be on reporter being able to continue normal routine. Risk Assessment should be shared with them by their SMLO and they should be involved in its creation. Reporter to be removed from any classes with the reported (also consider shared spaces and journey to/from school. NB - this is not a judgement of guilt and safeguards should be considered as above, for the reported.
2. **Individual needs basis** – (see paragraphs 69 and 70 – Sexual Violence and Sexual Harassment between children in schools or colleges, (DFE 2021)).

All risk assessments should be completed as a multi-agency, where possible, (consider which agencies are currently working with either reporter or reported) and shared with parents and reporter or reported to ensure they are adhered to. You should not delay putting together a risk assessment if other agencies are not initially available in order to safeguard all involved and the school community, but this should be reviewed as a multi-agency as soon as possible.

Risk assessments should be regularly reviewed and adjusted as appropriate.

Safeguard and support reporter and reported

Identify and signpost to relevant support agencies e.g. RASASC

Disciplinary measures taken

Refer to school's own behaviour and/or anti-bullying policy.

If reported to police, disciplinary measures may be undertaken based on balance of probabilities, unless prejudicial or unreasonable. Ensure actions do not jeopardise the investigation. Setting to work closely with police and/or other agencies.

Criminal process ends

Conviction or caution - follow the school's behaviour policy. If the pupil remains in school, make clear your expectations, keep reporter and reported apart. Consider reporter's wishes.

Not guilty – support reporter and reported.

No further action – support reporter and reported.

Supporting Guidance

[Sexual violence and sexual harassment between children in schools and colleges - GOV.UK \(www.gov.uk\)](https://www.gov.uk/government/publications/sexual-violence-and-sexual-harassment-between-children-in-schools-and-colleges)

[Statutory guidance overview: Keeping children safe in education - GOV.UK \(www.gov.uk\)](https://www.gov.uk/government/publications/statutory-guidance-overview-keeping-children-safe-in-education)

<https://limeculture.co.uk/embedding-a-whole-school-approach-to-sexual-misconduct-limeculture-launches-prevention-and-response-model-for-schools-and-colleges/>